



**PARK SYSTEM MASTER PLAN ADVISORY COMMITTEE AGENDA**  
**Wednesday, August 29, 2018 - 4:00 PM**  
**City Hall - Council Chambers**

---

The meeting location is accessible to persons with disabilities. A request for an interpreter for the DEAF AND HARD OF HEARING, or for other accommodations for persons with disabilities, should be made at least 48 hours in advance of the meeting to Peggy Hawker, City Recorder at 541.574.0613.

The agenda may be amended during the meeting to add or delete items, change the order of agenda items, or discuss any other business deemed necessary at the time of the meeting.

---

1. WELCOME AND STATUS REPORT
  
2. DOCUMENT REVIEW
  - 2.A Draft Park System Goals and Vision Statement  
[Newport ParksVision+Goals.pdf](#)
  - 2.B Park System Inventory  
[Newport\\_ParkSystemInventory.pdf](#)
  - 2.C Draft Level of Service Analysis  
[Newport\\_LOSReport.pdf](#)
  - 2.D Draft Opportunities Map
  
3. COMMUNITY WORKSHOP

4. PUBLIC COMMENT

5. NEXT STEPS



---

# FUTURE GOALS AND VISION STATEMENT

## NEWPORT PARK SYSTEM MASTER PLAN

**DRAFT JULY 19, 2018**

---

The following draft Vision statement was prepared based on guidance from the Park System Master Plan Advisory Committee and comments from a variety of other community stakeholders.

*The City of Newport will collaborate with community partners to create a park and recreation system that will:*

- *Be visually attractive and well-maintained and can continue to be maintained and improved in a financially and environmentally sustainable manner over time.*
- *Promote beautification and enhanced stormwater management through the use of climate-appropriate, ocean friendly design and landscaping.*
- *Incorporate and develop a system of multi-use trails offering opportunities for a full range of activities and ability levels, including walking, running, rolling, cycling, and mountain biking.*
- *Enhance wayfinding signage and create and improve non-motorized connections to better facilitate walking and bicycling between neighborhoods and parks, trails, open spaces, recreational facilities, and visitor destinations.*
- *Meet a full range of indoor and outdoor recreational needs for all ages by including opportunities for active and passive recreation, sports, socializing, environmental and cultural education, and enjoyment of nature.*
- *Serve all areas of the city in an equitable and effective manner.*
- *Maintain public access to the beach and improve recreational access to the Bay, including enhancements for people with limited mobility.*
- *Focus City and other local resources on meeting the needs of residents while also appealing to visitors, including leveraging visitor revenues to help fund development and maintenance of park and recreation facilities.*
- *Sustain and enhance partnerships with local community groups and other public agencies, including Lincoln County, the Lincoln County School District, Oregon Parks and Recreation*

*Newport Parks and Recreation System Master Plan*

*Department, the Port of Newport and others to integrate and manage recreational resources in a collaborative and cost-effective manner.*

- *Provide amenities within facilities to meet users' basic needs such as drinking fountains, restrooms, benches, shelters, and flexible open lawn areas.*
- *Develop and maintain accessible, all-weather facilities to accommodate small and large group gatherings throughout the year, including picnic shelters, plazas, and other public gathering spaces.*
- *Ensure that facilities are planned, designed, constructed, and maintained to promote lifelong physical health and safety for all community members.*

***CITY OF NEWPORT  
PARK SYSTEM MASTER PLAN  
EXISTING PARKS INVENTORY***

*Prepared for:*



*Prepared by:*



# INVENTORY

This inventory describes park and recreation facilities in Newport. It includes facilities and properties owned by the City of Newport, the Lincoln County School District, Lincoln County, the Oregon Department of Parks and Recreation and other landowners. All of the facilities provide some current or potential future recreational value or amenities and are available for use by the public or planned to be so in the future. The inventory identifies a primary and secondary classification for each facility and includes descriptive information about size, location, ownership, available amenities, and other information relevant to the use or condition of the facility. The inventory is meant to provide basic information about these facilities and also will help inform Park System Master Plan recommendations for future improvements to the park system.

## Parkland Definitions

TABLE 1. NEWPORT PARK CLASSIFICATIONS				
Primary Classification	Secondary Classification	General Description	Service Radius	Size Criteria
<b>PARKS</b>				
	Mini Park	Used to address limited, isolated or unique recreational needs.	Less than a 1/4 mile distance in residential setting.	Between 2500 sq. ft. and one acre in size.
	Pocket Park	Pocket parks provide limited recreational amenities, such as memorials, playgrounds, benches, and landscaping. Pocket parks do not normally provide off-street parking.	Entire Community - visitors tend to be those who are already in the neighborhood for other purposes such as shopping, work or dining.	1/4 acre - 2 Acres
	Neighborhood Park, School Park	Neighborhood parks are the basic unit of the park system. They serve as the informal, active and passive recreational focus for the neighborhood. Neighborhood parks may be owned by the city or be school district facilities. These include playgrounds and play fields, which serve neighborhood park functions and are available for general community use outside of school hours.	1/4 to 1/2 Mile distance and uninterrupted by non-residential roads and other physical barriers.	5 Acres is considered minimum size. 5 to 10 acres is optimal.
	Destination Park	Destination parks include the same facilities and activities as regional or natural area parks, but offer outstanding natural, historic, scenic, or recreational attractions. They can be day-use parks or can offer overnight camping or cabins.	Serve a region, state, or nation-wide population. More than an hour to several days driving time.	As needed to accommodate desired uses. Usually between 30 to 50 acres.
	Private Park	Parks and facilities that are privately owned yet contribute to the public park and recreation system.	Variable	Variable

TABLE 1. NEWPORT PARK CLASSIFICATIONS

Primary Classification	Secondary Classification	General Description	Service Radius	Size Criteria
<b>SPECIAL USE</b>				
	Skate Park	Outdoor area that has structures for skateboarders.	Variable	Depends on use and can vary
	Dog Park	Fenced outdoor area for dogs to play off leash.	Variable	Depends on use and can vary
	Disc Golf Course		Variable	Depends on use and can vary
	Recreation Facility	A public building or place that provides particular services.	Serves Community	Variable
	Senior Facility	Facility that provides recreational and other services specifically geared towards older adults.	Services Community	Variable
	Community Garden	A plot of land gardened collectively by a community.	Serves Community	
	Pier	A raised structure in a body of water. Piers can be used for working, fishing, or viewing.	Serves Community	Variable
	Ocean Park		Variable	Depends on use and can vary
	Farmer's Market		Serves Community	Variable
	Zone		Variable	Depends on use and can vary

TABLE 1. NEWPORT PARK CLASSIFICATIONS

Primary Classification	Secondary Classification	General Description	Service Radius	Size Criteria
<b>UNDEVELOPED PARKLAND AND OPEN SPACE</b>				
	Undeveloped	Land/greenspaces that lack infrastructure, or amenities.	Serves Community	Variable
	Open space	Any piece of land that is undeveloped and is accessible to the public.	Serves Community	Variable
	Nature Park	Includes greenways, natural areas, and preserves. Sites may contain trails, interpretive displays, view points and seating areas.	Resources available and opportunity	Variable
<b>TRAILS</b>				
	Trails	Includes a number of trail types to accommodate a variety of activities.	Serves Community	Variable
	Beach Access	Includes access to the beach for the public. May consist of a pathway and/or stairs.	Serves Community	Variable



## Summary of Facilities

The following pages summarize the current park and recreational facilities in Newport according to their primary and secondary park classifications. Table 2 classifies all the facilities and shows the acreage of each. The associated maps that follows present a summary of all city, county, school district, and state lands parks and open space that provide recreational amenities and services to the general public.

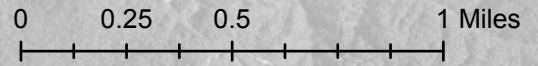
**TABLE 2. SUMMARY OF PARKS BY CLASSIFICATION**

Park Name by Classification	Acreage
<b>PARKS</b>	
<b>Mini Parks</b>	
P-03 Betty Wheeler Memorial Park	3.8
P-04 Coast Park	1.15
P-05 Don Davis Park	2.6
P-06 Literacy Park	1.0
P-07 Mombetsu Sister City Park	0.4
<b>Pocket Parks</b>	
P-33 Founding Rock Park	0.1
P-47 Former Clock Tower Site	0.1
<b>Neighborhood Parks</b>	
P-10 Wilder Twin Park	1.6
P-20 Big Creek Park	2.4
P-21 Frank V. Wade Memorial Park	7.8
P-45 Agate Beach Neighborhood and Dog Park	1.9
P-46 Sam Moore Skate Park and Parkway	5.0
P-24 Newport High School	6.0
P-25 Newport Middle School	20.0
P-29 Sam Case Elementary	2.75
P-30 Yaquina View Elementary School	7.75
<b>Private Park</b>	
P-34 Agate Beach Golf Course	43
<b>Destination Park</b>	
P-35 Agate Beach State Recreation Site	25
P-40 South Beach State Park	466
P-42 Yaquina Bay State Recreation Site	32
P-17 Yaquina Head Outstanding Natural Area	100

Park Name by Classification	Acreage
<b>SPECIAL USE</b>	
<b>Dog Park</b>	
P-45 Agate Beach Neighborhood and Dog Park	1.9
S-02 Wilder Dog Park	.17
<b>Skate Park</b>	
P-46 Sam Moore Skate Park and Parkway	5.3
<b>Pier</b>	
P-31 Abbey Street Pier/Bayfront Restroom	-
S-09 Bay Street Pier	-
S-10 Port Dock 1 (Sea Lion Dock)	-
S-11 Port of Newport Public Fishing and Crabbing Pier	-
<b>Other</b>	
S-12 South Beach Marina Boat Launch	-
P-08 Nye Beach Turnaround	0.7
P-32 Ernest Block Memorial Wayside	2.0
P-36 Lincoln County Commons	10
S-01 Presbyterian Church Community Gardens	1.0
S-03 Wilder Disc Golf Course	2.38 Mi
S-06 60+ Center	-
S-07 Recreation and Aquatic Center	-
S-08 Airport Community Garden	-
S-13 Newport Summer Farmers Market	0.7
S-14 Safe Haven Hill	1

Park Name by Classification	Acreage
<b>UNDEVELOPED PARKLAND AND OPEN SPACE</b>	
<b>Undeveloped</b>	
P-01 NE 7th St	1.1
P-02 Smith Storage Tank	0.35
P-09 Point Park	0.1
P-13 Big Creek Reservoir	536
P-43 Yaquina Bay Bridge Park	3.0
P-44 Jump Off Joe	2.0
<b>Open Space</b>	
P-11 Agate Beach Site (Blocks 109/110)	2.3
P-12 Big Creek Open Space	12.93
P-14 Coastal Gully Open Space	2.8
P-15 Forest Park	92
P-16 Little Creek Open Space	21
P-48 Coast Park Open Space	0.2
P-49 Nautical Hill Open Space	24.5
P-50 SW 9th St. Property	0.2
P-51 Chestnut Street Open Space	9.6
P-52 Wastewater Treatment Plan Site	33.5
P-53 San-Bay-O Open Space	0.75
P-54 Museum Properties	0.3

Park Name by Classification	Mileage
<b>TRAILS</b>	
<b>Beach Access</b>	
T-01 Lucky Gap Trail	0.2
T-02 Ocean to Bay Trail	0.67
T-06 Yaquina Bay Beach Trail (Coast Guard Trail)	0.5
<b>Trails</b>	
T-03 Sam Moore Parkway Trail	.28
T-04 Oregon State University Hatfield Marine Science Center Yaquina Bay Estuary Trail	0.5
T-05 Bayfront Boardwalks	0.25
T-08 Mike Miller Park to Wilder Twin Park Trail	0.8
T-10 Mike Miller Park Education Trail	1.0

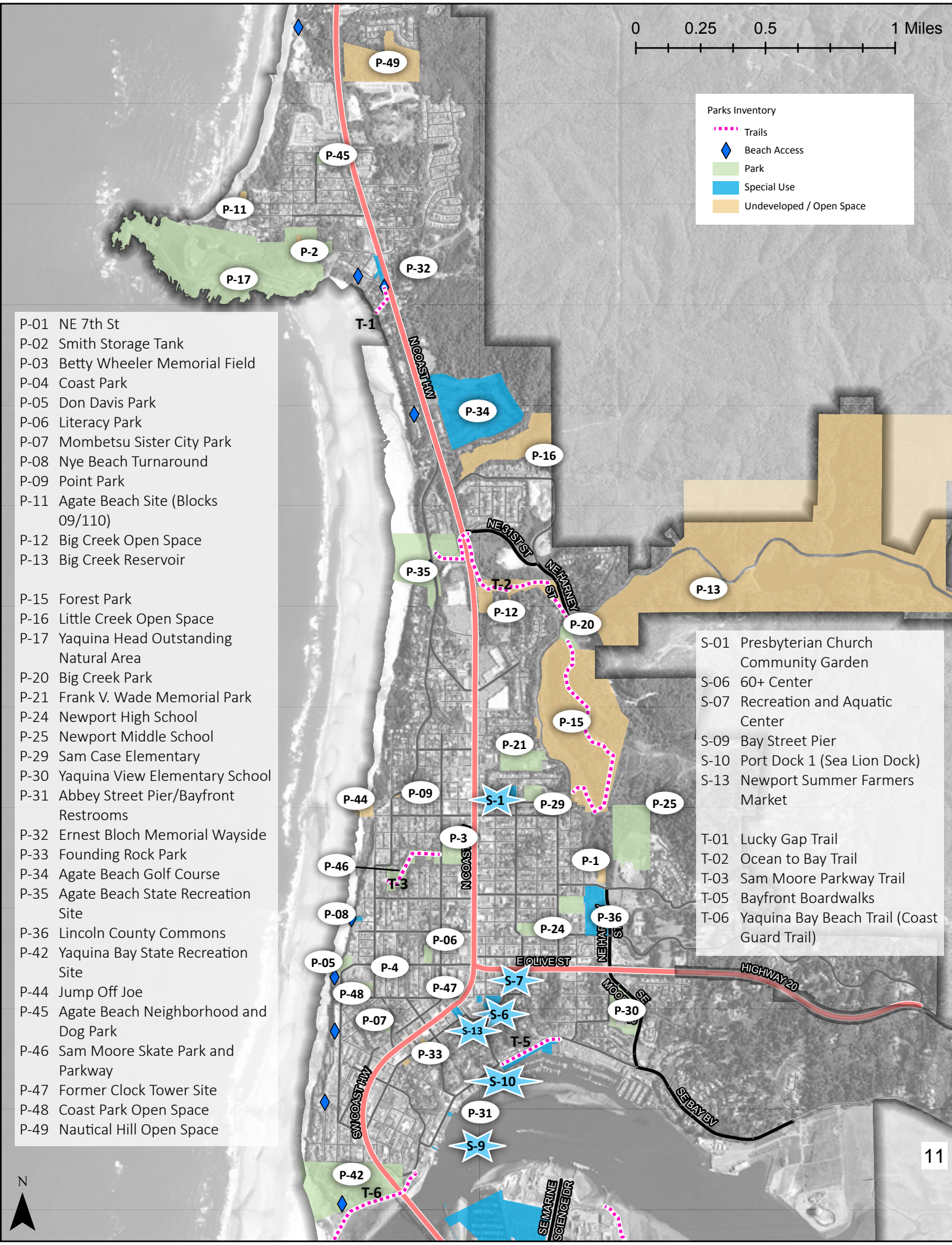


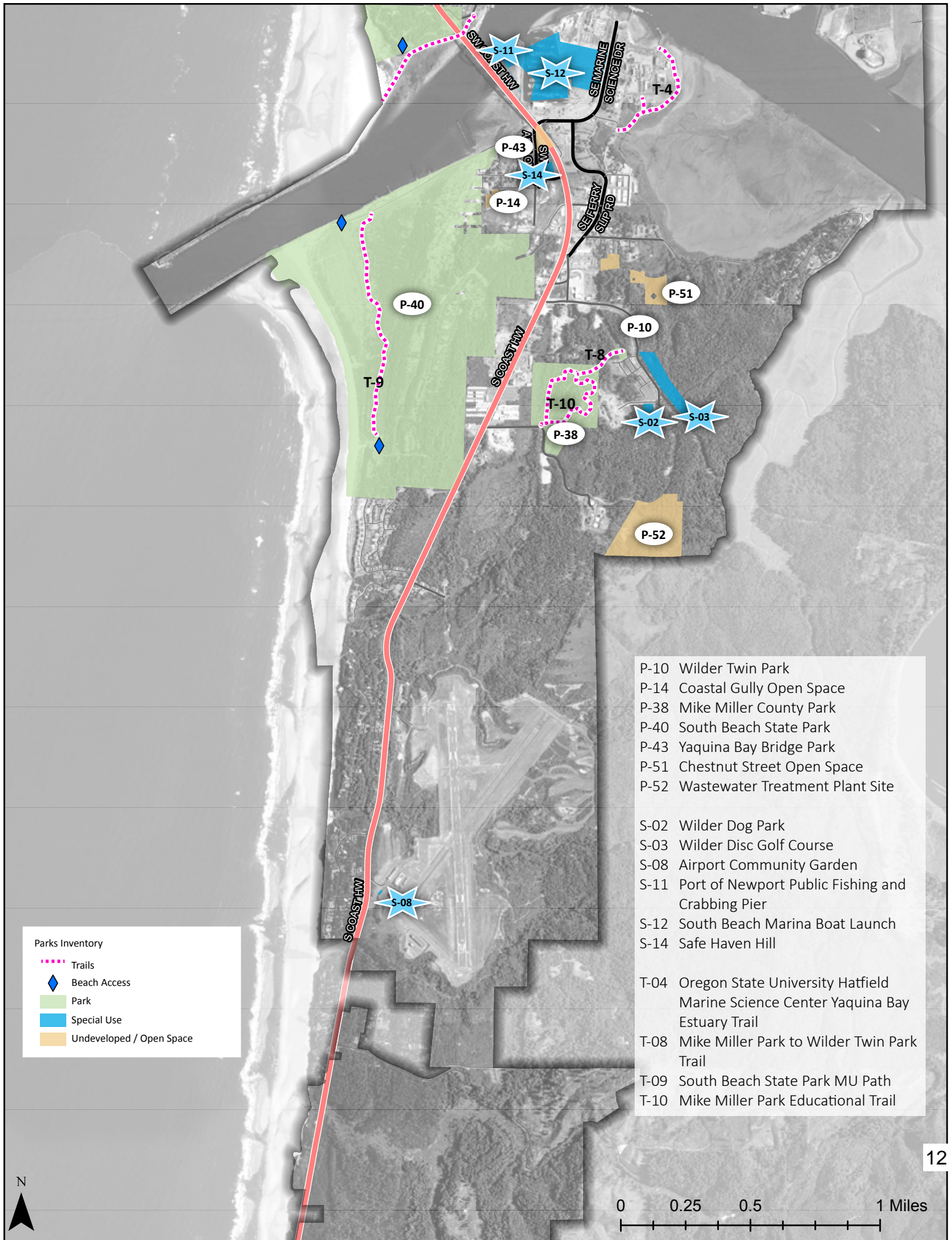
**Parks Inventory**

- Trails
- Beach Access
- Park
- Special Use
- Undeveloped / Open Space

- P-01 NE 7th St
- P-02 Smith Storage Tank
- P-03 Betty Wheeler Memorial Field
- P-04 Coast Park
- P-05 Don Davis Park
- P-06 Literacy Park
- P-07 Mombetsu Sister City Park
- P-08 Nye Beach Turnaround
- P-09 Point Park
- P-11 Agate Beach Site (Blocks 09/110)
- P-12 Big Creek Open Space
- P-13 Big Creek Reservoir
- P-15 Forest Park
- P-16 Little Creek Open Space
- P-17 Yaquina Head Outstanding Natural Area
- P-20 Big Creek Park
- P-21 Frank V. Wade Memorial Park
- P-24 Newport High School
- P-25 Newport Middle School
- P-29 Sam Case Elementary
- P-30 Yaquina View Elementary School
- P-31 Abbey Street Pier/Bayfront Restrooms
- P-32 Ernest Bloch Memorial Wayside
- P-33 Founding Rock Park
- P-34 Agate Beach Golf Course
- P-35 Agate Beach State Recreation Site
- P-36 Lincoln County Commons
- P-42 Yaquina Bay State Recreation Site
- P-44 Jump Off Joe
- P-45 Agate Beach Neighborhood and Dog Park
- P-46 Sam Moore Skate Park and Parkway
- P-47 Former Clock Tower Site
- P-48 Coast Park Open Space
- P-49 Nautical Hill Open Space

- S-01 Presbyterian Church Community Garden
- S-06 60+ Center
- S-07 Recreation and Aquatic Center
- S-09 Bay Street Pier
- S-10 Port Dock 1 (Sea Lion Dock)
- S-13 Newport Summer Farmers Market
- T-01 Lucky Gap Trail
- T-02 Ocean to Bay Trail
- T-03 Sam Moore Parkway Trail
- T-05 Bayfront Boardwalks
- T-06 Yaquina Bay Beach Trail (Coast Guard Trail)





- P-10 Wilder Twin Park
- P-14 Coastal Gully Open Space
- P-38 Mike Miller County Park
- P-40 South Beach State Park
- P-43 Yaquina Bay Bridge Park
- P-51 Chestnut Street Open Space
- P-52 Wastewater Treatment Plant Site
  
- S-02 Wilder Dog Park
- S-03 Wilder Disc Golf Course
- S-08 Airport Community Garden
- S-11 Port of Newport Public Fishing and Crabbing Pier
- S-12 South Beach Marina Boat Launch
- S-14 Safe Haven Hill
  
- T-04 Oregon State University Hatfield Marine Science Center Yaquina Bay Estuary Trail
- T-08 Mike Miller Park to Wilder Twin Park Trail
- T-09 South Beach State Park MU Path
- T-10 Mike Miller Park Educational Trail

**Parks Inventory**

- ⋯ Trails
- ◆ Beach Access
- Park
- Special Use
- Undeveloped / Open Space

# Icon Legend

	ADA CONCERNS		Picnic Area
	Amphitheater		Pier
	Baseball		Playground Equipment
	Basket Ball		Restrooms
	BBQs		Walk/Run Track
	Beach Access		Shelter
	Bench		Signage/Interpretive
	Bicycle Parking		Multi-purpose Field
	Boardwalk		Skate Park
	Disc Golf Course		Tennis/Pickleball Courts
	Dog Park		Trails/Path
	Fishing/Crabbing		Volley Ball
	Garden/Landscape		Water Fountain
	Gazebo		
	Open Field		
	Open space-Undeveloped		
	Parking spaces		

**Parks - Mini Park: P-03  
Betty Wheeler Memorial Park**

Acreage: 3.8

Ownership: City of Newport

Location: 52 NW Nye St.

Facilities:



Notes:

No marked ADA parking.

City-sponsored drainage and field improvements in progress.



**Parks - Mini Park: P-04  
Coast Park**

Acreage: 1.15

Ownership: City of Newport

Location: 370 W Olive St.

Facilities:



Notes:

Southwestern portion undeveloped but plans exist for trail connection to beach.

50+ parking spaces.



**Parks - Mini Park: P-05  
Don Davis Park**

Acreage: 2.6

Ownership: City of Newport

Location: 840 W Olive St.

Facilities:



Notes:

27 parking spaces.

Memorial.

**Parks - Mini Park: P-06  
Literacy Park**

Acreage: 1.0

Ownership: City of Newport

Location: 370 W Olive St.

Facilities:



Notes:

20 parking spaces.

Library maintains landscaping.

No close by curb cuts to enter from Olive Street.



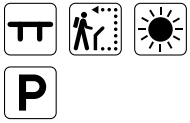
**Parks - Mini Park: P-07**  
**Mombetsu Sister City Park**

Acreage: 0.4

Ownership: City of Newport

Location: 620 SW Neff Way

Facilities:



Notes:

3 parking spaces.

**Parks - Pocket Park: P-33**  
**Founding Rock Park**

Acreage: 0.1

Ownership: City of Newport

Location: 511 SW Coast Highway

Facilities:





**Parks - Pocket Park: P-47  
Former Clock Tower Site**

Acreage: 0.1

Ownership: City of Newport

Location: SW 2nd & SW Coast Hwy.



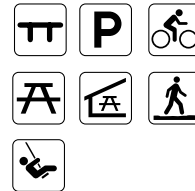
**Parks - Neighborhood Park: P-10  
Wilder Twin Park**

Acreage: 1.6

Ownership: City of Newport

Location: 625 SE 43rd St.

Facilities:



Notes:

3 parking spaces.



**Parks - Neighborhood Park: P-20  
Big Creek Park**

Acreage: 2.4

Ownership: City of Newport

Location: 2,510 NE Big Creek Rd.

Facilities:



Notes:

ADA access only to shelter.

10+ parking spaces.

Reservation needed for shelter: \$23 for 4 hours,  
\$46 for 5+ hours.

Horse shoe pits.



**Parks - Neighborhood Park: P-21  
Frank V. Wade Memorial Park**

Acreage: 7.8

Ownership: City of Newport

Location: 1445 NE Big Creek Rd.

Facilities:



Notes:

78 parking spaces.

Baseball field no longer subject to park use deed  
restriction and is used exclusively by School  
District.



**Parks - Neighborhood Park: P-45  
Agate Beach Neighborhood and Dog Park**

Acreage: 1.9

Ownership: City of Newport

Location: 185 NW 60th St.

Facilities:



Notes:

20 parking spaces.

Deteriorated playground equipment removed.

**Parks - Neighborhood Park: P-46  
Sam Moore Skate Park & Parkway**

Acreage: 5.3

Ownership: City of Newport

Location: 656 NW High St.

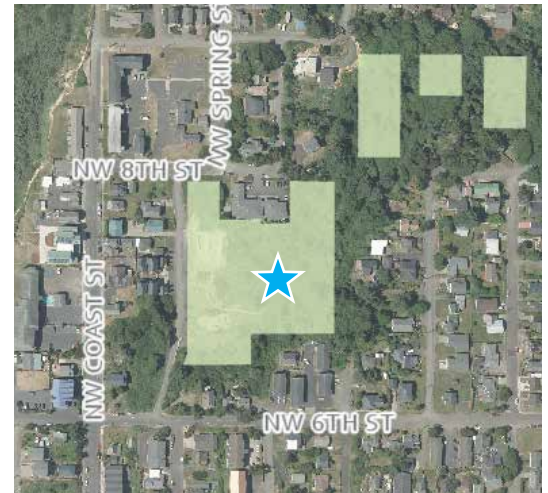
Facilities:



Notes:

15 parking spaces.

ADA - All gravel entrance.



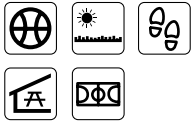
**Parks - Neighborhood Park: P-24  
Newport High School**

Acreage: 6.0

Ownership: Lincoln County School District

Location: 322 NE Eads St.

Facilities:



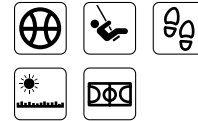
**Parks - Neighborhood Park: P-25  
Newport Middle School**

Acreage: 20

Ownership: Lincoln County School District

Location: 825 NE 7th St.

Facilities:



Notes:

Playground and playing fields available for community use per shared use agreement between City and School District.



**Parks - Neighborhood Park: P-29  
Sam Case Elementary**

Acreage: 2.75

Ownership: Lincoln County School District

Location: 459 NE 12th St.

Facilities:



Notes:

Playground and playing fields available for community use per shared use agreement between City and School District.



**Parks - Neighborhood Park: P-30  
Yaquina View Elementary School**

Acreage: 7.75

Ownership: Lincoln County School District

Location: 351 SE Harney St.

Facilities:



Notes:

Playground and playing fields available for community use per shared use agreement between City and School District.



**Parks - Private Park: P-34**  
**Agate Beach Golf Course**

Acreage: 43

Ownership: Private

Location: 4100 North Coast Highway

**Parks - Destination Park: P-35**  
**Agate Beach State Recreation Site**

Acreage: 25

Ownership: OPRD

Location: Agate Beach State Wayside

Facilities:



**Parks - Destination Park: P-40**  
**South Beach State Park**

Acreage: 466

Ownership: OPRD

Location: 5580 SW Coast Hwy

Facilities:



Notes:

Campground, horse shoes

**Parks - Destination Park: P-42**  
**Yaquina Bay State Recreation Site**

Acreage: 32

Ownership: OPRD

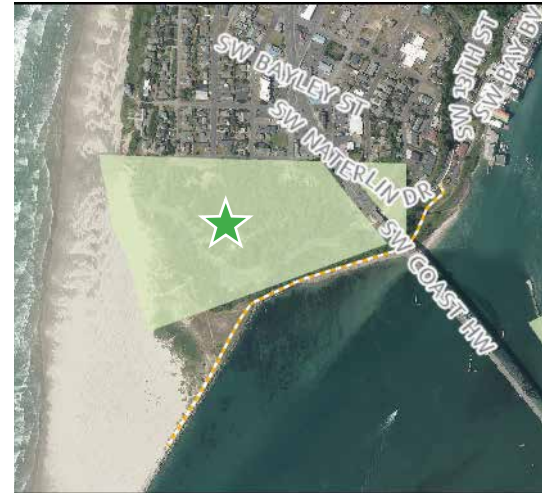
Location: 846 SW Government St.

Facilities:



Notes:

Lighthouse



**Parks - Destination Park: P-17  
Yaquina Head Outstanding Natural  
Area**

Acreage: 100

Ownership: US Bureau of Land Management

Location: 750 NW Lighthouse Drive

Facilities:



Notes:

No ADA access to lighthouse tower.

Lighthouse structure listed on National Register.

BLM.





**Special Use - Dog Park: P-45  
Agate Beach Neighborhood and Dog Park**

Acreage: 1.9

Ownership: City of Newport

Location: 185 NW 60th St.

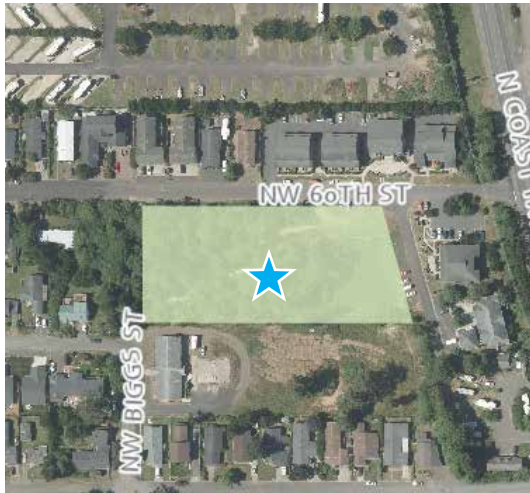
Facilities:



Notes:

20 parking spaces.

Deteriorated playground equipment removed.



**Special Use - Dog Park: S-02  
Wilder Dog Park**

Acreage: 0.17

Ownership: Private

Location: SE Harborton and SE College Way

Facilities:



Notes:

Location is not guaranteed to be permanent and facility could move at some point.



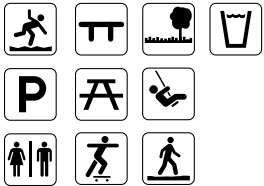
**Special Use - Skate Park: P-46**  
**Sam Moore Skate Park & Parkway**

Acreage: 5.3

Ownership: City of Newport

Location: 656 NW High St.

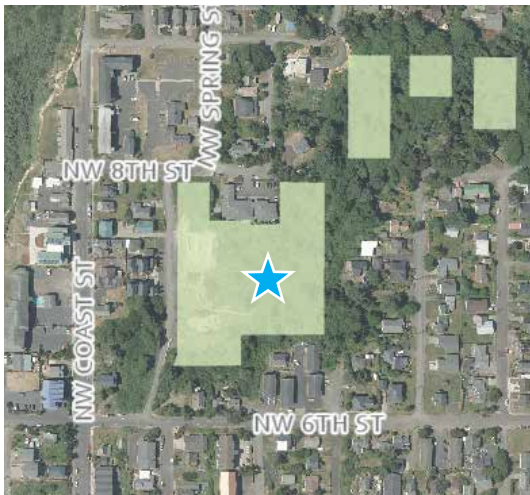
Facilities:



Notes:

15 parking spaces.

ADA - All gravel entrance.

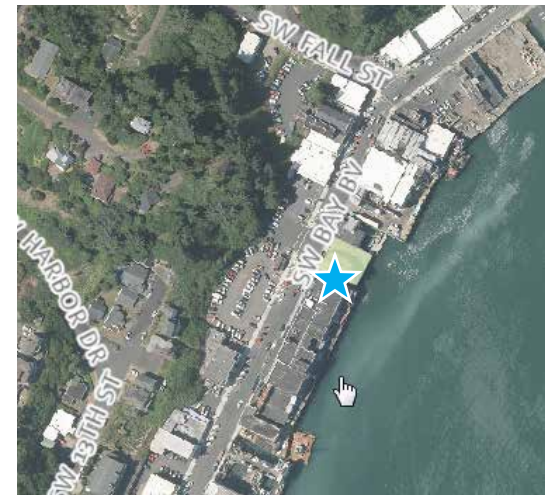
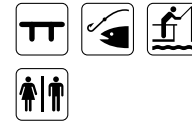


**Special Use - Pier: P-31**  
**Abbey Street Pier / Bayfront Restrooms**

Ownership: City of Newport

Location: 704 Bay Blvd.

Facilities:



**Special Use - Pier: S-09  
Bay Street Pier**

Ownership: City of Newport

Location: Bay St. & Bay Bv.

Facilities:



**Special Use - Pier: S-10  
Port 1 (Sea Lion Dock)**

Ownership: Port of Newport

Location: 315 SW Bay Bv.

Facilities:



**Special Use - Pier: S-11**  
**Port of Newport Public Fishing and**  
**Crabbing Pier**

Ownership: Port of Newport

Location: 2320 SE Marine Science Dr.

Facilities:



**Special Use - Other: S-12**  
**South Beach Marina Boat Launch**

Ownership: Port of Newport

Location: 2124 SE Marine Science Dr.



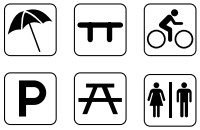
**Special Use - Other: P-08  
Nye Beach Turnaround**

Acreage: 0.7

Ownership: City of Newport

Location: 704 NW Beach Drive

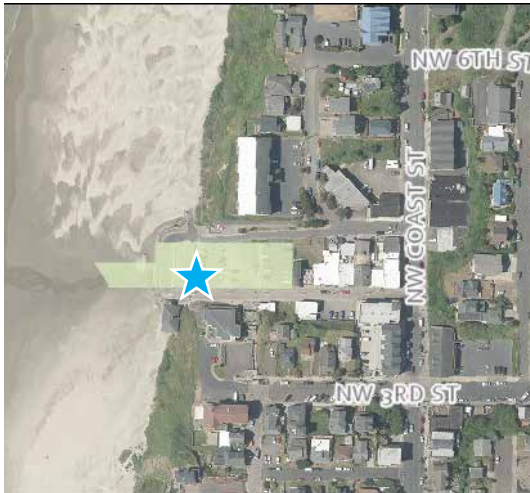
Facilities:



Notes:

45 parking spaces.

No plantings - too windy



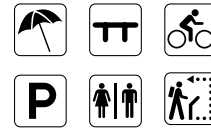
**Special Use - Other: P-32  
Ernest Block Memorial Wayside**

Acreage: 2.0

Ownership: ODOT & City

Location: 5035 N Coast Hwy.

Facilities:



Notes:

Memorial, showers and changing rooms. New memorial located at the Lucky Gap trailhead.



**Special Use - Other: P-36  
Lincoln County Commons**

Acreage: 10

Ownership: County

Location: 633 NE 3rd St.

Facilities:



**Notes:**

Hosts fair, master gardeners, and 4-H activities as well as seasonal Farmers Market and other indoor community events.



**Special Use - Other: S-01  
Presbyterian Church Community  
Gardens**

Acreage: 1.0

Ownership: First Presbyterian Church

Location: 227 NE 12th St.

Facilities:



**Special Use - Other: S-03  
Wilder Disc Golf Course**

Acreage: 2.38 Miles

Ownership: Private

Location: SE Harborton St.

Facilities:



**Notes:**

Location is not guaranteed to be permanent and facility could move at some point.



**Special Use - Other: S-06  
60+ Center**

Acreage: --

Ownership: City of Newport

Location: 20 SE 2nd St.

Facilities:



**Notes:**

23 parking spaces.

Meals, indoor activity areas, dance floor.



**Special Use - Other: S-07  
Recreation and Aquatic Center**

Acreage: --

Ownership: City of Newport

Location: 225 SE Avery St.

Facilities:



Notes:

118 parking spaces.

Swimming pool, classrooms, showers.



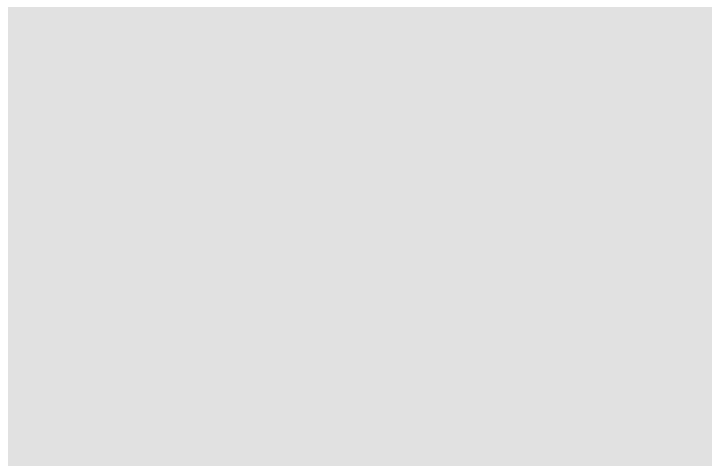
**Special Use - Other: S-08  
Airport Community Garden**

Acreage: --

Ownership: City of Newport

Location: Newport Municipal Airport

Facilities:





**Special Use - Other: S-13  
Newport Summer Farmers Market**

Acreage: 0.7

Ownership: City of Newport

Location: Hwy 101 & Angle St.

Facilities:



**Notes:**

Restrooms located at City Hall.

Outdoor Farmers Market Location May-  
November.



**Special Use - Other: S-14  
Safe Haven Hill**

Acreage: 1

Ownership: ODOT

Location: 2901 SW Abalone St.

**Notes:**

Tsunami Evacuation Area

ODOT owned



**Undeveloped: P-01**  
**NE 7th St**

Acreage: 1.1

Ownership: City of Newport

Location: NE Harney & NE 7th

Facilities:



**Undeveloped: P-02**  
**Smith Storage Tank**

Acreage: 0.35

Ownership: City of Newport

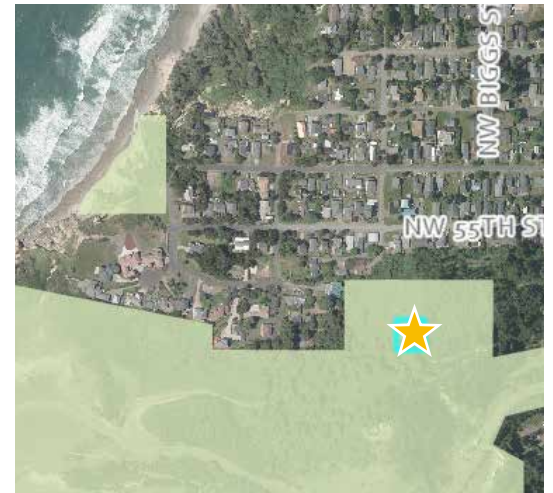
Location: NW 55th & Azalea

Facilities:



Notes:

Potential for trail connection



**Undeveloped: P-09  
Point Park**

Acreage: 0.1

Ownership: City of Newport

Location: NW 12th & Spring

Facilities:



Notes:

Deteriorated playground equipment removed prior to 1993. Neighbor maintains and mows it.



**Undeveloped: P-13  
Big Creek Reservoir**

Acreage: 536

Ownership: City of Newport

Location: Big Creek Rd.

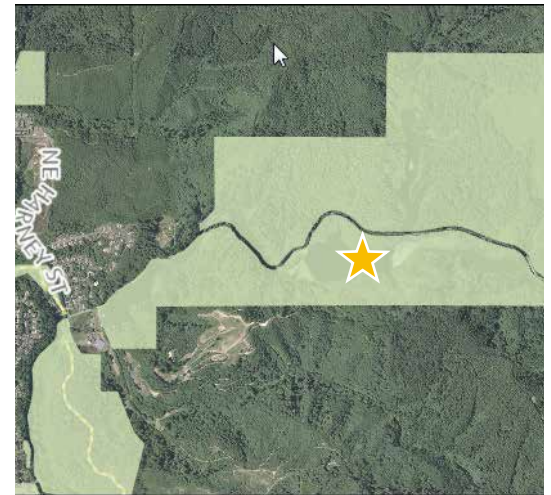
Facilities:



Notes:

City reservoirs

Planning for multi-use trail system in progress by NEWTS community group.



**Undeveloped: P-43**  
**Yaquina Bay Bridge Park**

Acreage: 3.0

Ownership: ODOT

Location: Under Yaquina Bay Bridge on South side

Facilities:



Notes:

ODOT Property with development limitations;  
 Concept Plan developed as part of Coho/Brant  
 Infrastructure Refinement Plan.



**Undeveloped: P-44**  
**Jump Off Joe**

Acreage: 2.0

Ownership: Lincoln County / City of Newport

Location: NW 11th & Coast St

Facilities:



Notes:

11 parking spaces.



**Open Space: P-11**  
**Agate Beach Site (Blocks 109/110)**

Acreage: 2.6

Ownership: City of Newport

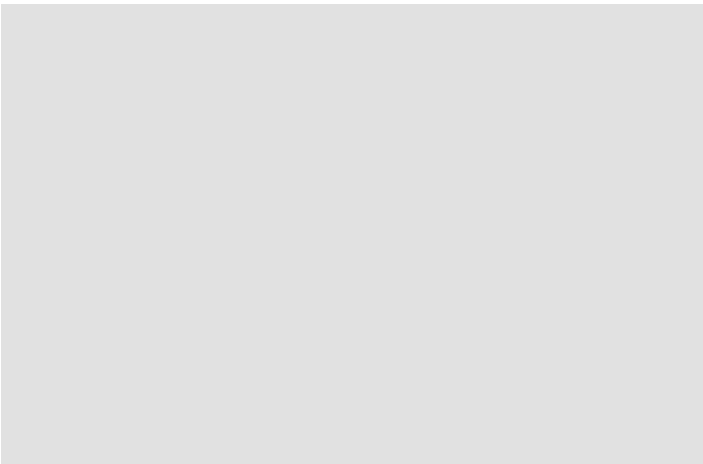
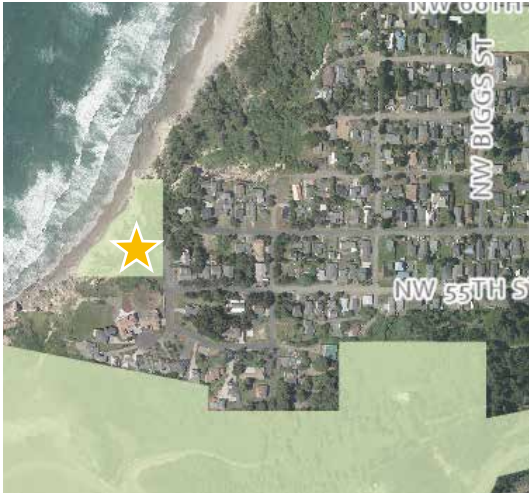
Location: 5625 NW Pinery St.

Facilities:



Notes:

Potential for beach access improvements.



**Open Space: P-12**  
**Big Creek Open Space**

Acreage: 12.93

Ownership: City of Newport

Location: NE Harney St. and Big Creek Rd.

Facilities:



Notes:

Includes Ocean to Bay trail segment.



**Open Space: P-14**  
**Coastal Gully Open Space**

Acreage: 2.8

Ownership: City of Newport

Location: SW 30th & Coho

Facilities:



**Open Space: P-15**  
**Forest Park**

Acreage: 92

Ownership: City of Newport

Location: 1212 NE Fogarty St.

Facilities:



Notes:

Passive recreation area with gravel road and trails connecting to Big Creek Park as well as water tanks and distribution lines.

**Open Space: P-16  
Little Creek Open Space**

Acreage: 21

Ownership: City of Newport

Location: NW 36th (behind Little Creek

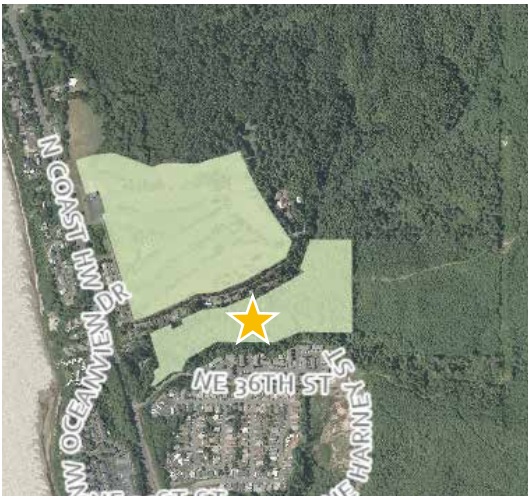
Apartments)

Facilities:



Notes:

Open space conveyed to city concurrent with Little Creek Apt. development.



**Open Space: P-48  
Coast Park Open Space**

Acreage: 0.2

Ownership: City of Newport

Location: 370 W Olive St.

Facilities:



Notes:

Area of park southwest of slide. Plans exist for trail connection to beach.



**Open Space: P-49**  
**Nautical Hill Open Space**

Acreage: 24.5

Ownership: City of Newport

Location: East of 101 between 66 and 68 St.

Facilities:



**Open Space: P-50**  
**SW 9th St. Property**

Acreage: 0.2

Ownership: City of Newport

Location: 442 SW 9th St.





**Open Space: P-51**  
**Chestnut Street Open Space**

Acreage: 9.6

Ownership: City of Newport

Location: East of SE Chestnut Street Between SE 35th and SE Harborton St.

Facilities:



**Open Space: P-52**  
**Wastewater Treatment Plan Site**

Acreage: 33.5

Ownership: City of Newport

Location: 5525 SE 50th Pl.

Facilities:



**Open Space: P-53**  
**San-Bay-O Open Space**

Acreage: 0.75

Ownership: City of Newport

Location: Eastern edge of San Bay-O Circle

Facilities:



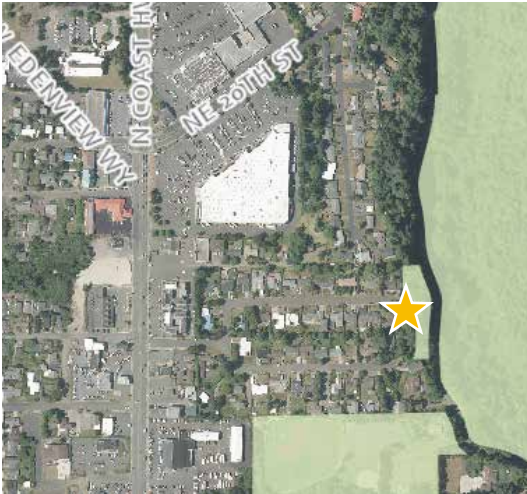
**Open Space: P-54**  
**Museum Properties**

Acreage: 0.3

Ownership: City of Newport

Location: 579 SW 9th St.

Facilities:



**Trails - Beach Access: T-01  
Lucky Gap Trail**

Mileage: 0.2

Ownership: City of Newport

Location: Ernest Block Memorial Wayside

Facilities:



**Notes:**

Trail to Agate Beach from parking area.



**Trails - Beach Access: T-02  
Ocean to Bay Trail**

Mileage: 0.67

Ownership: City of Newport

Location: NE Harney Dr. & NE Big Creek Rd.

Facilities:



**Notes:**

Restrooms located at the wayside.

Trail connecting Agate Beach Wayside to Big Creek Park, including boardwalks, bridges, and tunnel running under Highway 101.



**Trails - Beach Access: T-06**  
**Yaquina Bay Beach Trail (Coast Guard Trail)**

Mileage: 0.5

Ownership: Multiple

Location: Off SW Naterlin Drive, west of Coast Guard Station Yaquina Bay

Facilities:



Notes:

Portions of the trail are discontinuous or not currently usable; improvements needed to complete connections.



**Trails: T-03**  
**Sam Moore Parkway Trail**

Mileage: 0.28

Ownership: City of Newport

Location: Sam Moore Parkway

Facilities:



Notes:

Trail connecting Nye St. at Betty Wheeler Field to Sam Moore Parkway.



**Trails: T-04**  
**Oregon State University Hatfield**  
**Marine Science Center Yaquina Bay**  
**Estuary Trail**

Mileage: 0.5

Ownership: Joint Port of Newport / State of Oregon

Location: 2030 SE Marine Science Dr.

Facilities:



**Trails: T-05**  
**Bayfront Boardwalks**

Mileage: 3.8

Ownership: City of Newport

Location: 165 - 456 Bay Blvd.

Facilities:



**Trails: T-08**  
**Mike Miller Park to Wilder Twin Park**  
**Trail**

Mileage: 0.8

Ownership: -City of Newport

Location: SE 50th St.

Facilities:



**Trails: T-10**  
**Mike Miller Park Education Trail**

Mileage: 10

Ownership: Lincoln County

Location: SE 50th St., Newport

Facilities:











MEMORANDUM

**Draft Parks Level of Service (LOS) Analysis**  
**City of Newport Parks Master Plan**

DATE August 22, 2018  
TO Rachel Cotton, City of Newport  
FROM Andrew Parish and Matt Hastie, Angelo Planning Group  
CC

**INTRODUCTION**

This memorandum describes the methodology and results of the Newport Park System Master Plan Draft Level of Service (LOS) Analysis. The purpose of this analysis is to describe the current and future parks needs for the City of Newport and to identify gaps in parks coverage, in terms of park types, park facilities, and park locations.

**METHDOLOGY AND DATA SOURCES**

**Parks Classification**

The draft Parks Inventory categorizes parks facilities into the following classifications:

**Parks**

- Mini Park
- Pocket Park
- Neighborhood Park
- School park
- Destination Park
- Private Park

**Trails**

- Trails
- Beach Access Points

**Special Use**

- Skate Parks
- Dog Parks
- Piers
- Special Use Areas

**Undeveloped Parkland and Open Space**

- Undeveloped
- Open Space
- Nature Park

These park categories are defined and described in more detail in the Newport Parks Inventory Report.

For the purposes of this analysis, these classifications represent the varying “service areas” of park facilities. Smaller parks such as mini-parks and neighborhood parks are intended to provide for those who live within a close vicinity, while larger destination parks serve visitors from near and far. These service areas are discussed in detail later in this memorandum.

## Population Forecast and Demographic Information

Portland State University’s Population Research Center (PRC) provides 50-year coordinated population forecasts for cities throughout the state of Oregon. Population projections for Newport are summarized below.

2010 Decennial Census data and 2012-2016 American Community Survey 5-year estimates were used to conduct additional demographic analysis for this report to help determine relative accessibility of parks for various groups within the City of Newport. The following demographic information was examined in this analysis:

- Location of individuals and/or households with members under the age of 18
- Location of individuals and/or households with members over the age of 65
- Location of individuals of Hispanic/Latino/a Descent
- Location of renters versus homeowners

## DEMOGRAPHICS

---

### Changing Demographics

In 1993, at the time Newport’s last Park System Master Plan was created, sixteen percent of Newport’s population was 65 years or older. Today about one fourth of the city’s population is 65+. The number of Newport residents who identify as Hispanic or Latino has almost doubled since the year 2000, currently comprising around sixteen percent of the City’s population. Over one quarter of Newport’s youth (age 19 and under) are Hispanic or Latino, and one half of Newport’s households are renters. Taking these changing demographics and future population projections into consideration will be an important element in planning for the future of the City’s Park System.

### Population Forecast

Table 1 below shows the population forecast for Lincoln County and its cities. The City of Newport has an estimated population of 10,825 within its Urban Growth Boundary (UGB) in 2017, and is expected to grow to 12,728 by 2035, an average rate of 0.9% per year.

Table 1. Population Forecast for Lincoln County UGB Areas

	Historical			Forecast				
	2000	2010	AAGR (2000-2010)	2017	2035	2067	AAGR (2017-2035)	AAGR (2035-2067)
<i>Lincoln County</i>	44,479	46,034	0.3%	47,944	52,962	60,628	0.6%	0.4%
Depoe Bay UGB	1,174	1,394	1.7%	1,459	1,826	2,342	1.3%	0.8%
Lincoln City UGB	8,717	8,969	0.3%	9,329	10,352	11,854	0.6%	0.4%
<b>Newport UGB</b>	<b>10,118</b>	<b>10,554</b>	<b>0.4%</b>	<b>10,825</b>	<b>12,728</b>	<b>15,757</b>	<b>0.9%</b>	<b>0.7%</b>
Siletz UGB	1,133	1,314	1.5%	1,342	1,530	1,795	0.7%	0.5%
Toledo UGB	3,645	3,730	0.2%	3,777	4,089	4,456	0.4%	0.3%
Waldport UGB	2,220	2,244	0.1%	2,282	2,693	3,359	0.9%	0.7%
Yachats UGB	617	690	1.1%	773	998	1,325	1.4%	0.9%
Outside UGBs	16,855	17,139	0.2%	18,156	18,747	19,739	0.2%	0.2%

Sources: U.S. Census Bureau, 2000 and 2010 Censuses; Forecast by Population Research Center (PRC).

## Census Demographics in Newport

Census tracts in Newport are shown in Figure 1. Geographically, these census tracts cover a much larger area than the City of Newport itself, but the overwhelming majority of individuals within these census tracts live within the Newport Urban Growth Boundary. Table 2 describes characteristics of these census tracts.

Figure 1. Newport Census Tracts

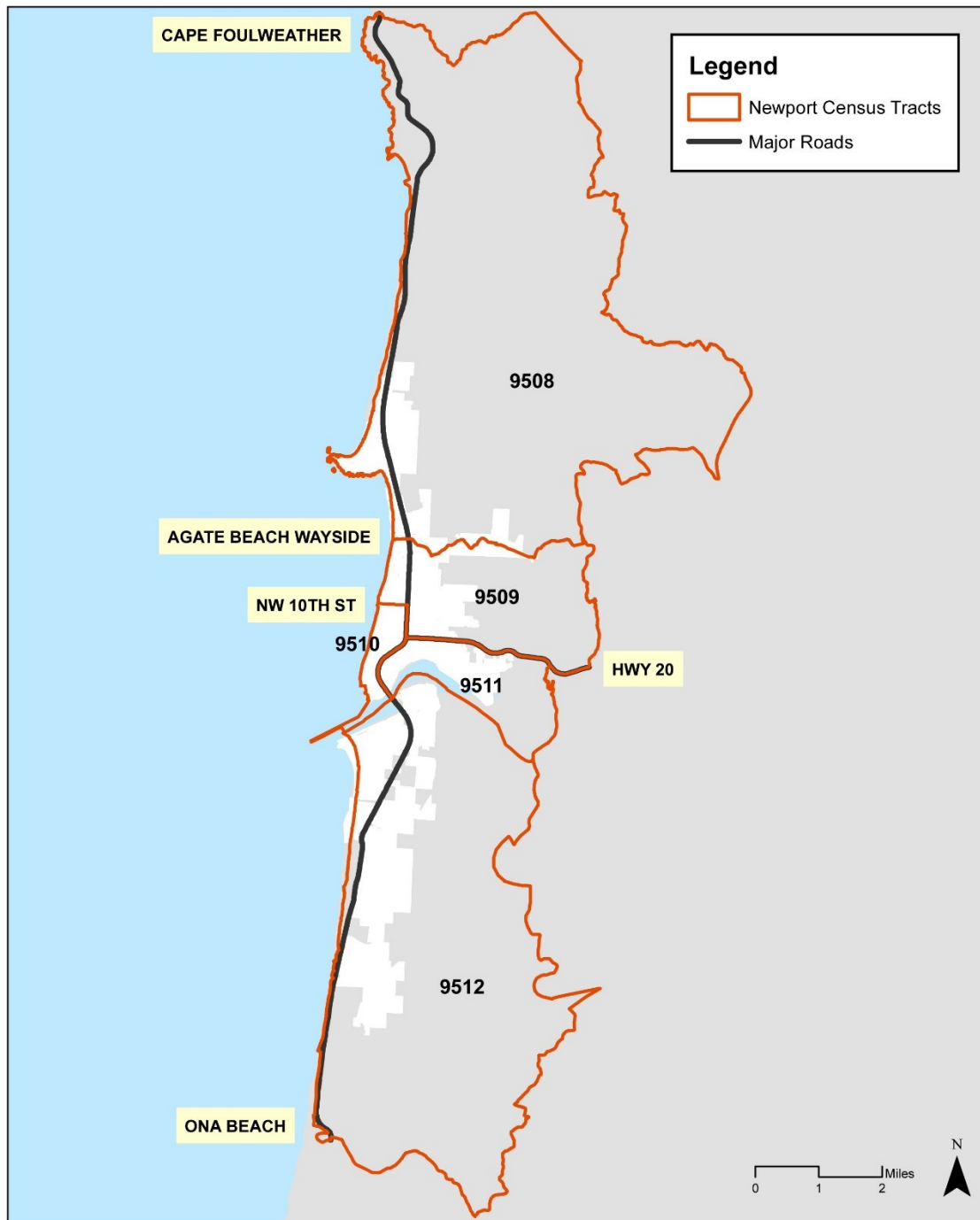


Table 2. Demographic Summary for Newport Area Census Tracts

	Newport	Census Tract 9508	Census Tract 9509	Census Tract 9510	Census Tract 9511	Census Tract 9512	Oregon
Median Age	43	44	36	41	52	58	39
% HH with Children Under 18	24%	18%	32%	23%	11%	14%	29%
% Population 65 Years and Over	23%	31%	15%	14%	29%	31%	16%
% Owner Occupied Housing	49%	64%	46%	31%	63%	72%	61%
% Hispanic or Latino	16%	6%	27%	18%	8%	3%	12%

### Households with children under 18

Table 2 shows the percentage of households containing children under the age of 18 by census tracts in the Newport area. The greatest concentration of households with children under 18 are in Nye Beach and Central Newport, within Census Tracts 9509 and 9510. In general, it is particularly important for these households to be within walking distance of parks with basic amenities such as playground structures, open areas for informal play, and picnic areas.

### Population 65 Years and Over

Table 2 shows the percentage of households containing a member over the age of 65 by census tracts in the Newport area. The greatest concentration of these households is in Tract 9508 (between Cape Foulweather and the Agate Beach Wayside), Tract 9511 (City Center/Bayfront area, South of Highway 20 and east of Highway 101), and Tract 9512 (between South Beach and Ona Beach). It is clear that households with older members and those with younger members tend to be concentrated in different areas of the city. Because these census tracts encompass areas outside the UGB, these figures also represent clusters of retirees and other rural landowners in unincorporated areas surrounding Newport. Older adults in particular value opportunities to walk close to where they live on paved accessible trails or pathways. Many of them also use facilities and services provided by the Newport 60+ Center. Older adults on average have a greater incidence of physical mobility limitations than other community members, and some are no longer able to drive at night, or at all. All of these factors can have an impact on community elders' ability to access different types of parks, trails and other recreation facilities.

### Home Tenure (Rent vs. Own)

Table 2 shows the percentage of homes that are owner-occupied by census tract. There is a stark difference between areas on the northern and southern reaches of Newport and surrounding the Bayfront, which are overwhelmingly owner-occupied, with the census tracts that are in Nye beach and around the schools, which are majority renter-occupied. Additional outreach is needed to determine specialized recreational needs of renters in Newport, if any. They may value facilities such as playgrounds, open areas for informal play, and community gardens, which are not always provided through rental housing.

## Hispanic and Latinx Population

Tracts 9509 and 9510 contain much higher concentrations of Hispanic or Latinx individuals than the other areas of the city. Only 3% of residents of Tract 9512, which encompasses everything south of the Yaquina Bay Bridge, are Hispanic or Latinx. Our work in other parks planning processes has not shown a significant difference in the types of park and recreation facilities needed or highly valued by these residents as a group, with the exception of a higher priority for soccer fields and areas for large family or group gatherings (i.e. picnic shelters with cooking facilities).

## Interpretation

Taken together, these maps show distinct differences in the population of “outer” Newport, including North Newport, Agate Beach, and South Beach. Residents in these areas tend to be older, without children in the household, more likely to own their home, and whiter. Those living in “central” Newport are more likely to be renters, Hispanic or Latinx, and have children in their household. These differences may play a role in the number and type of park facilities and park improvements community members may prioritize in different locations.

## PARKS INVENTORY

---

The locations of park facilities are noted on the overall inventory maps included as Figure 5 and Figure 6. The full inventory of parks within Newport is provided as a separate document.

Figure 2. Parks Inventory – Northern Area

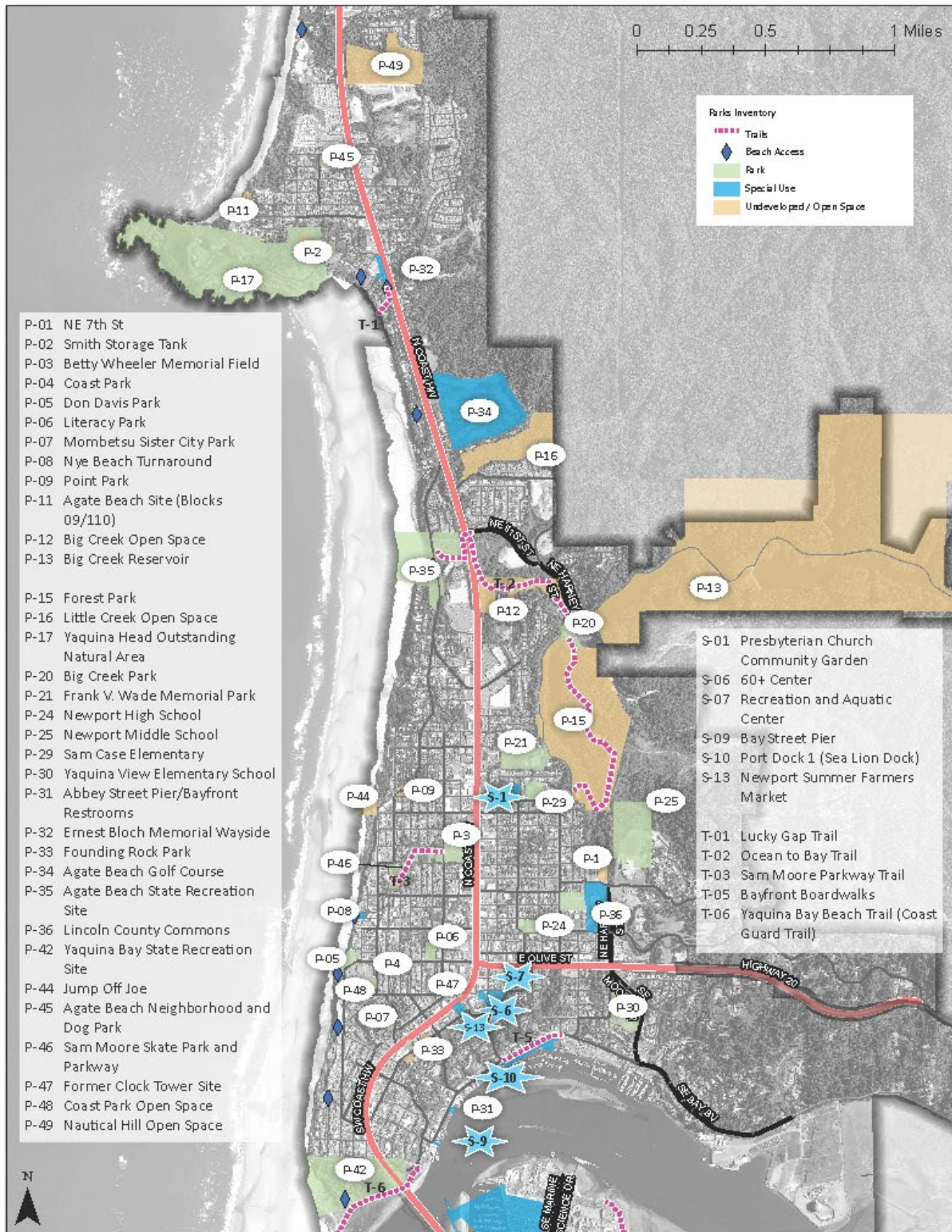
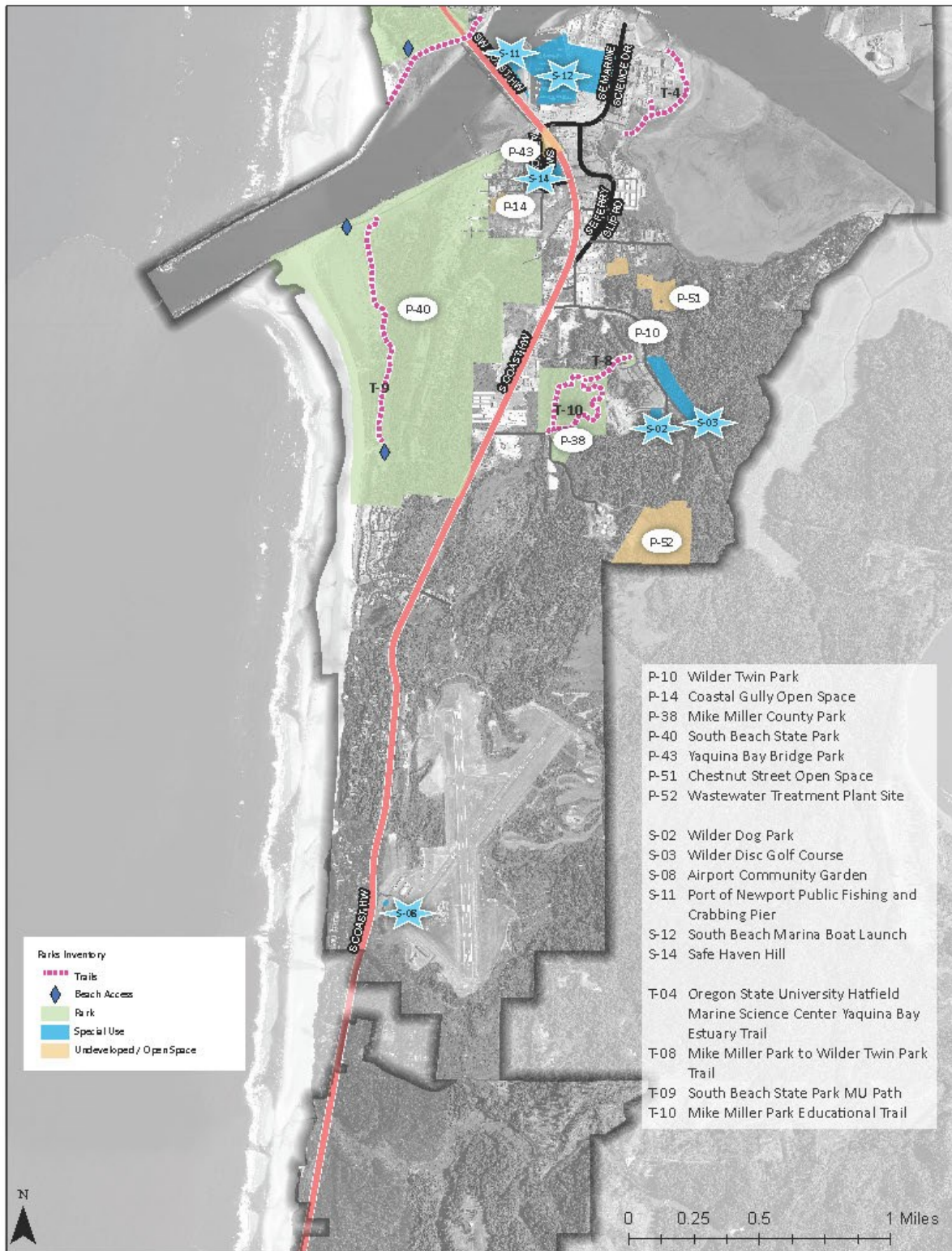


Figure 3. Inventory – Southern Area





## PARKS LEVEL OF SERVICE

A common indicator of level of service for a parks system is to examine the amount of park land per 1,000 residents. Table 3 identifies the estimated acreage of parks included within this inventory as compared to the current and forecasted population.

Newport meets or exceeds Statewide Comprehensive Outdoor Recreation Plan (SCORP) suggested standards for all park types and has increased its ratio of public parkland in all listed categories since the creation of the City's last Park System Master Plan in 1993. The one exception to this is destination parks, where existing facilities continue to serve an increasing population, resulting in a slight decrease in destination parks per 1,000 residents since 1993, though the local ratio still greatly exceeds the SCORP suggested standard. The increase in the ratio of neighborhood parks since the 1993 plan can be attributed to the expansion of Sam Moore Parkway and the construction of Wilder Twin Park and the Agate Beach Neighborhood and Dog Park.

Newport school playgrounds and playing fields are available for community use outside of school hours, per a shared use agreement between the City and the Lincoln County School District. School grounds have been counted as neighborhood parks within this analysis, which contributes significantly to the city's per capita ratio of neighborhood parks. The partnership between the Lincoln County School District and the City of Newport greatly benefits area residents by increasing community access to playgrounds and playing fields through shared use of facilities at area schools.

Table 3. Parks Acreage

Park Type	Total Acreage	Ratio at time of 1993 Plan	Park Acres per 1,000 Population (2017 pop. of 10,825)	Park Acres per 1,000 Population (2035 pop. of 12,728)	SCORP 2013-2017 Suggested Standard
Neighborhood Park (Including schools)	55	0.3*	5.1	4.3	1 to 2
Neighborhood Park (not including schools)	18.7	0.3	1.7	1.5	1 to 2
Mini or Pocket Park	9	0.5	0.8	0.7	0.25 to 0.50
Destination Park	623	59.8	57.6	41.1	20 to 30
Private Park	43	5.0	4.0	3.4	none
Special Use Parks	23.5	N/A	2.2	1.8	none
Undeveloped Open Space	842	31.9	77.8	66.2	2 to 6~

\*Not including schools; ~SCORP standard for nature parks

This simple level of service analysis does not provide the full picture of facilities within Newport, in part due to the city's unique beach and bay-related amenities, which are difficult to quantify in terms of acreage. It is also difficult to use this type of assessment for comparison purposes because state and national parks planning organizations no longer recommend basing parks service on state or national

acreage guidelines. This analysis may, however, provide a useful metric to track over the long term, as the City's population continues to grow.

Access to park resources, rather than mere acreage, is expected to be a more appropriate lens through which to examine parks in Newport. We have defined the following general "service areas" for park classifications within the inventory. Not all park types have a service area defined. In some cases, such as near the Agate Beach Neighborhood and Dog Park, these service areas do not cross Highway 101 because there are no safe pedestrian or bicycle connections.

Table 4. Park Service Areas

Classification	Service Area	Notes
Destination Park	More than an hour to several days driving time	Destination parks are intended to serve the regional community, as well as tourists.
Neighborhood Parks (including schools)	.5 Miles	These parks are intended to serve residents within walking distance and include facilities owned by both the City and School District.
Mini Parks & Pocket Parks	.25 Miles	These parks often do not include parking and are intended to provide open space amenities to nearby residents. Some provide little to no recreational value.
Beach Access Points	.5 miles (walking) and 3 miles (driving)	Access to the beach is an important amenity for Newport, providing opportunities for walking and various types of recreation
Private Parks	Whole Community	Private parks, such as the Agate Beach Golf Course, can have a wide draw and service area.

Figure 4. Beach Access Points with 1/2 Mile Buffer and 3 Mile Buffer

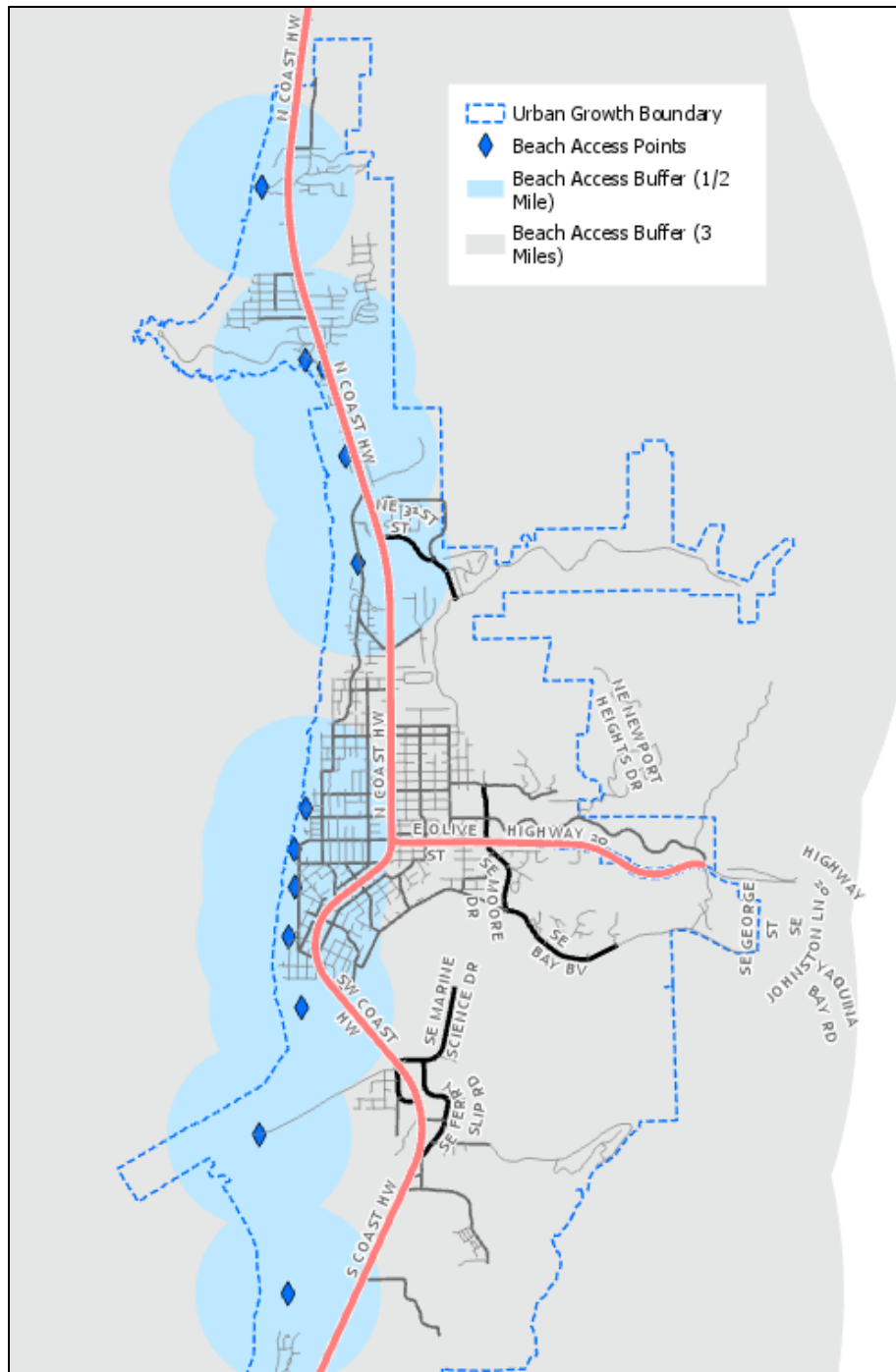


Figure 5. Mini Parks and Service Area Buffers

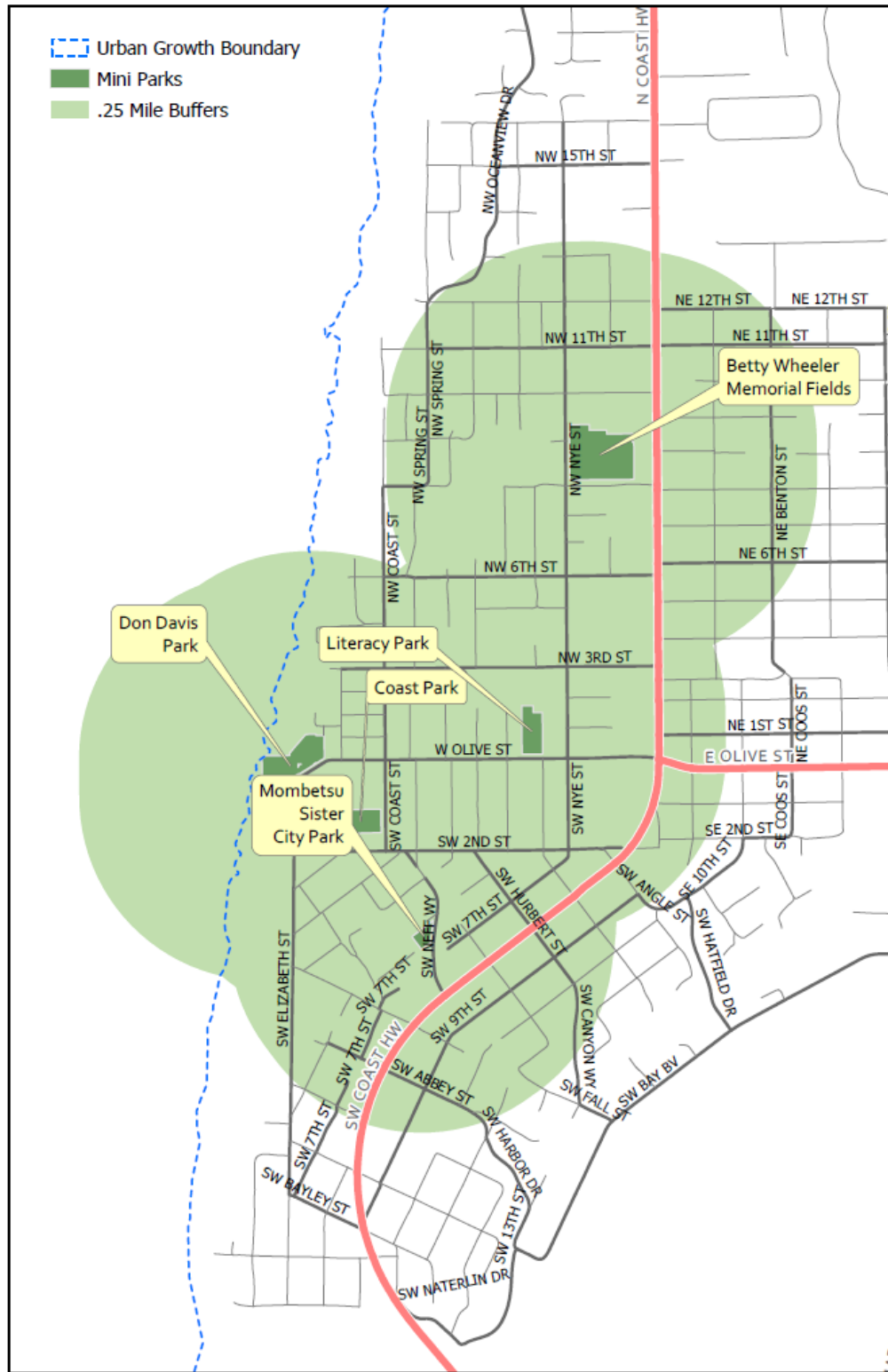


Figure 6. Neighborhood Parks and Service Area Buffers

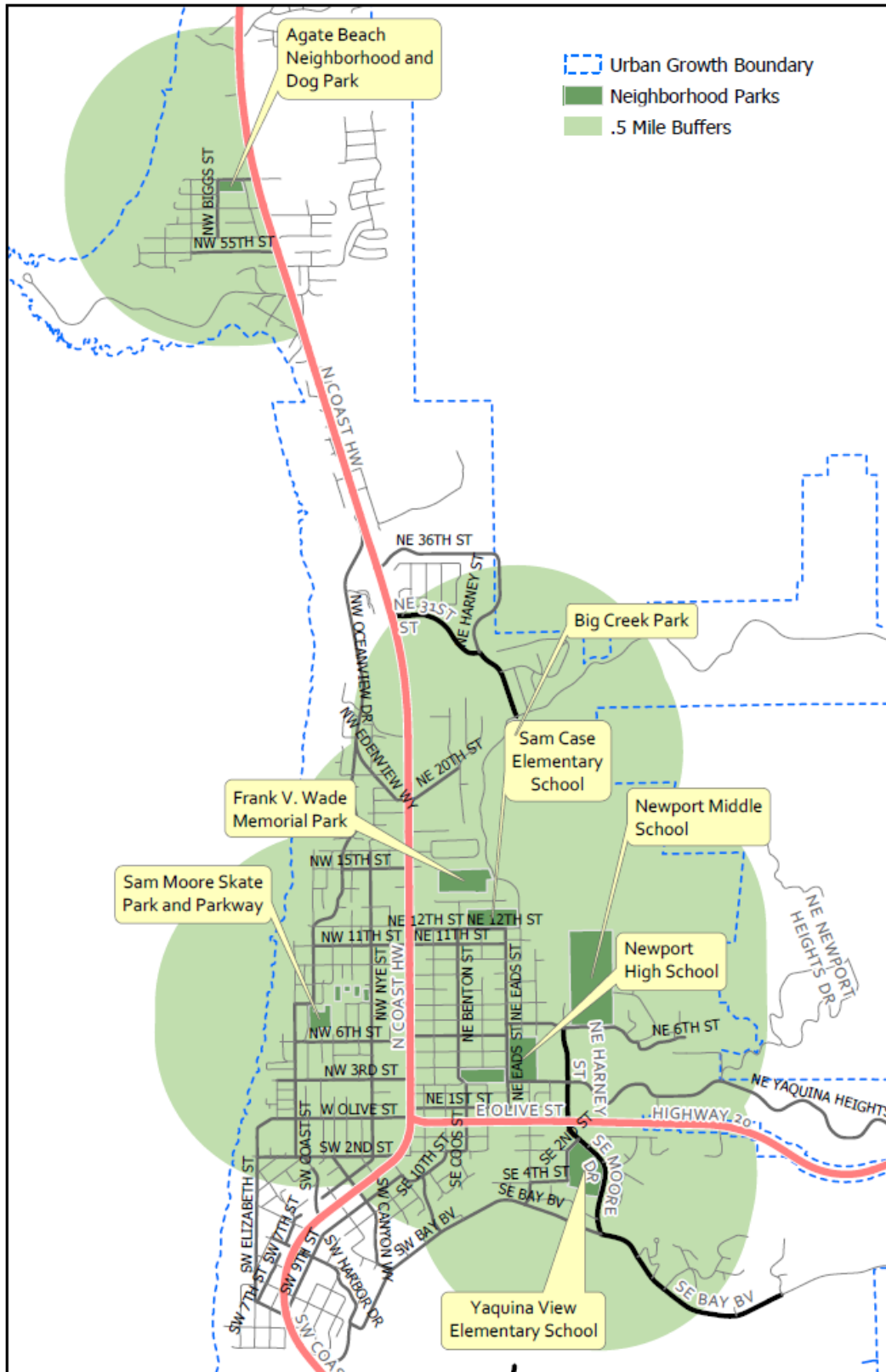
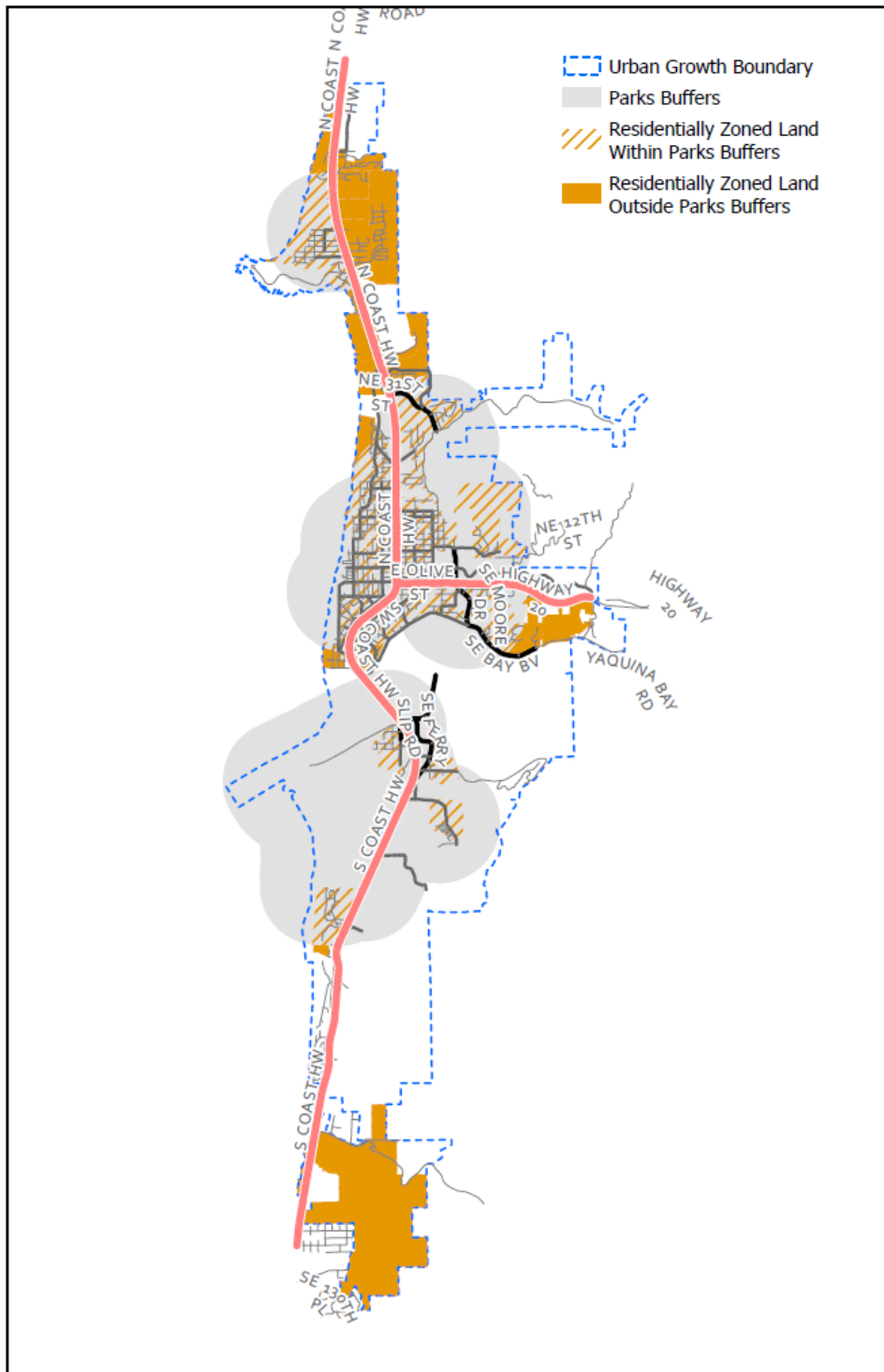


Figure 10 shows these service area buffers for all parks overlaid on the City's residential zoning designations. Areas outside these buffers in solid orange represent residential land that may not have easy access to park facilities or beach access points.

Figure 7. All Parks Service Area Buffers and Residential Land



In addition to park classification, the parks inventory completed for this task identified important park amenities. These parks have been identified as having at least two of the following three amenities: Playground equipment, an open field, and a picnic area. These parks are shown on Figure 11 and listed below:

- P-45 Agate Beach Neighborhood and Dog Park
- P-20 Big Creek Park
- P-04 Coast Park
- P-21 Frank V. Wade Memorial Park
- P-46 Sam Moore Skate Park and Parkway
- P-10 Wilder Twin Park
- P-29 Sam Case Elementary
- P-25 Newport Middle School
- P-40 South Beach State Park

Notes about these areas follow:

- **Northern Newport**
  - o Residences north of Schooner Creek / NW 68<sup>th</sup> are outside of the service area of the Agate Beach Neighborhood and Dog Park, though many homes west of Highway 101 are adjacent to the beach itself. Cul-De-Sacs, unimproved roads, and winding subdivisions in this area mean the Agate Beach Park is even further removed from and less accessible to many of the surrounding neighbors. Highway 101 is the only route for reaching parks to the South, and there are no sidewalks, marked or signalized crossings, or bicycle lanes in this area.
  - o Some residentially-zoned land lies outside the service area buffers of park facilities on the northeastern edge of the UGB. However, this land is not currently developed and largely unbuildable due to slopes and natural features such as Schooner Creek.
  - o The residential areas between NE 31<sup>st</sup> and NE 36<sup>th</sup> (which include a significant multifamily development) are outside the service areas for parks with full amenities. Big Creek Park is the closest to these areas, but there are no sidewalks on NE Harney, NE 31<sup>st</sup>, or N Coast Highway to allow for pedestrian access. The Ocean to Bay Trail at NE 31<sup>st</sup> crosses beneath Highway 101, but few other safe highway crossings are available in this area.
- **Central Newport, South of Highway 20, East of Highway 101**
  - o There is undeveloped land outside the buffer surrounding the Bayfront, north of Bay Blvd/Yaquina Bay Road. Many residences in this area are on the south-facing slope with views of Yaquina Bay. There are no sidewalks east of Vista Drive. The Bayfront boardwalk and piers are a significant recreational amenity, but the only park facilities apart from those at Yaquina View Elementary School are across Highway 101 or Highway 20.
- **South Beach**
  - o There is a significant area zoned R-4 Residential High-Density Multifamily at the southern tip of the City which is the planned location of the Wolf Tree Destination Resort Area. This area does not contain park facilities currently.

Figure 8. Full Service Parks and Buffers with Residentially-Zoned Land

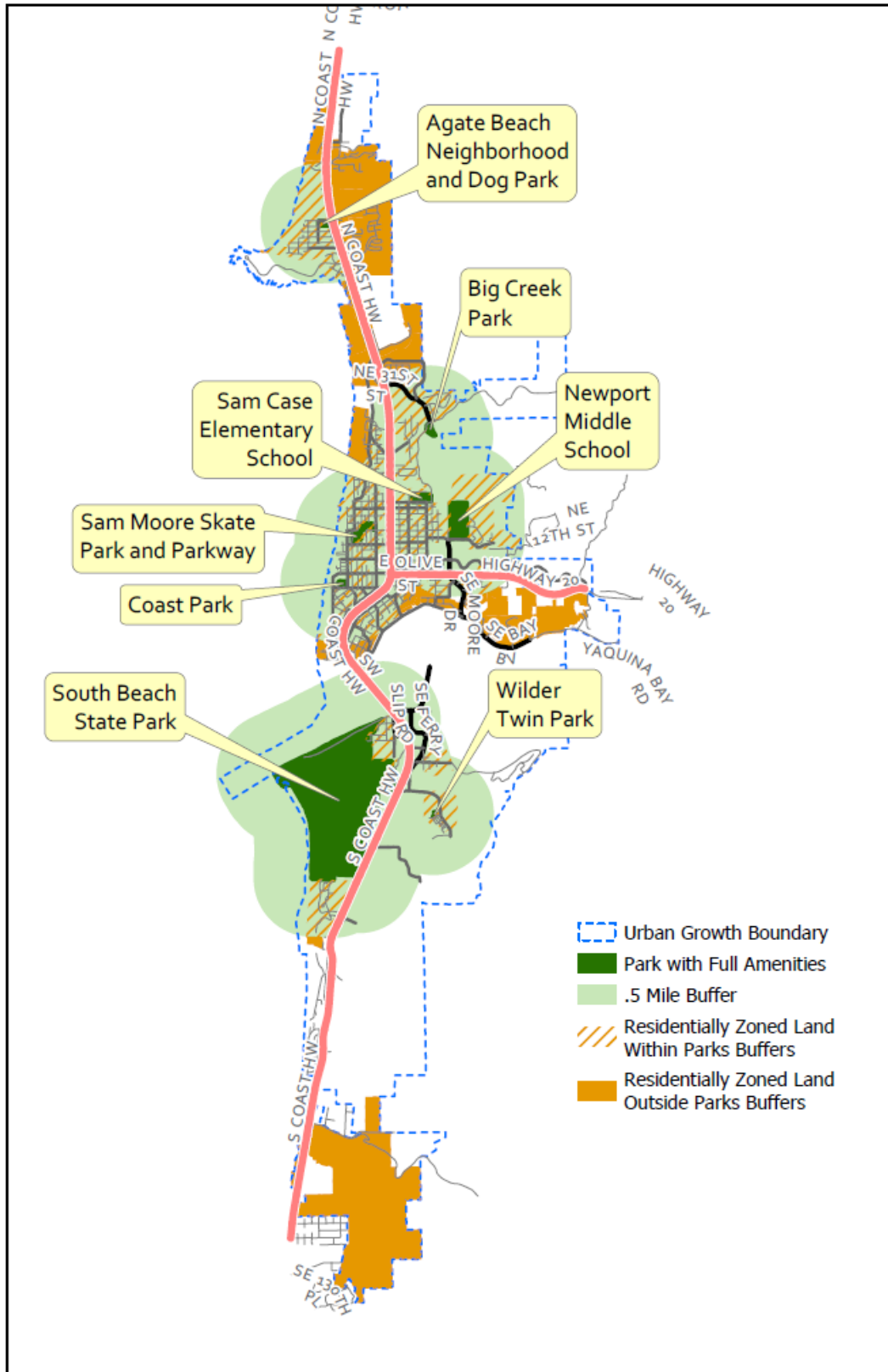




Table 5. Park and Recreation Facilities

Facility Type	Total Number	Facility per 1,000 Population (2017 pop. of 10,825)	Facility per 1,000 Population (2035 pop. of 12,728)	SCORP 2013-2017 Recommended LOS Per 1,000
Baseball Fields	1	0.09	0.08	0.2
Softball Fields	2	0.18	0.16	0.2
Youth Baseball/Softball	5	0.5	0.4	0.2
Outdoor Basketball courts	5	0.5	0.4	0.2
Multipurpose fields*	3	0.3	0.2	N/A
Soccer Fields	3	0.3	0.2	0.2
Non School District Soccer/Multipurpose fields	0	0	0	0.2
Tennis courts	5	0.5	0.4	0.35
Picnic shelters	5	0.5	0.4	0.3
Playgrounds	9	0.8	0.7	0.4
Skateboard Parks	1	0.09	0.08	0.04
Off-leash dog parks	2	0.2	0.2	0.04
Non-motorized boat launches	0	0	0	0.25
Trails, Pathways, and Bikeways	4.2	0.4	0.3	0.5 to 1.5 miles

\*Includes soccer, football, and lacrosse

Depending on how existing ball fields are classified, Newport does not meet the SCORP recommended standard for baseball and softball fields but exceeds the standard for youth and recreational baseball and softball fields. The baseball field at Frank Wade Park is used exclusively by the School District for high school baseball. More outreach is needed to determine the adequacy of the City's existing ball field facilities for different ages, local leagues, and demands. Newport has two soccer fields at Newport Middle School, one at Newport High School, and a series of informal practice fields in additional locations. The City does not currently have any of its own soccer or multipurpose playing fields, and local leagues are dependent on the school fields for games. There are not any non-motorized boat launches within the UGB. Additionally, the City's provision of trails, pathways, and bikeways falls short of the SCORP standard.