

CITY OF NEWPORT, OR.

# NEWPORT MUNICIPAL AIRPORT

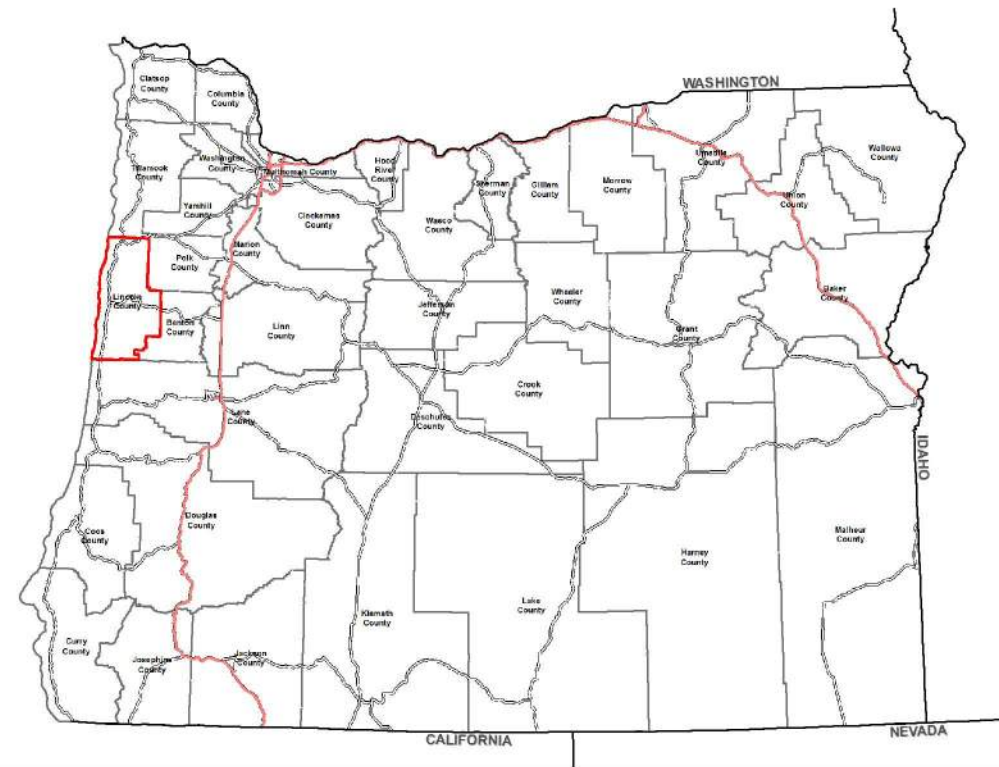
## AIRPORT LAYOUT PLAN

### AIP #3-41-0040-023

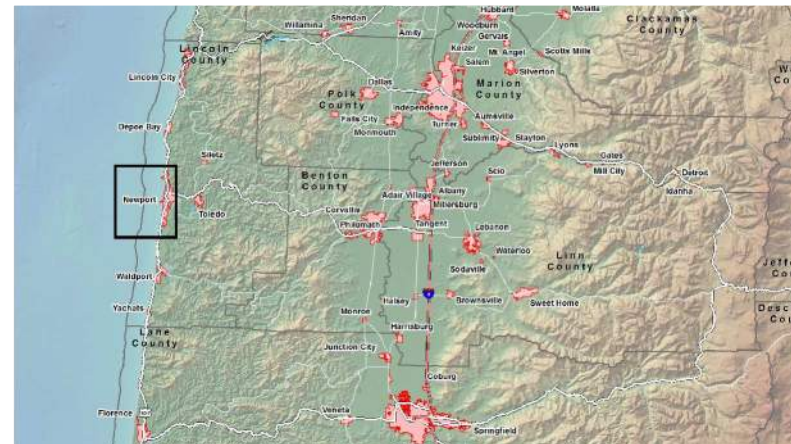
February 2018

SHEET	DESCRIPTION
1	COVER
2	DATASHEET
3	AIRPORT LAYOUT PLAN
4	TERMINAL AREA PLAN
5	OBSTRUCTION DATA TABLES
6	AIRSPACE PLAN (PART 77)
7	RUNWAY 16-34 APPROACH SURFACE
8	RUNWAY 16 EXTENDED APPROACH SURFACE
9	RUNWAY 16 INNER APPROACH
10	RUNWAY 34 INNER APPROACH
11	RUNWAY 2-20 APPROACH SURFACE
12	RUNWAY 2 INNER APPROACH
13	RUNWAY 20 INNER APPROACH
14	RUNWAY 16-34 DEPARTURE
15.1	OFF-AIRPORT LAND USE
15.2	ON-AIRPORT LAND USE
16	PROPERTY MAP
17	UTILITIES

STATE OF OREGON - LINCOLN COUNTY



LOCATION MAP



VICINITY MAP



DATE: 8/29/2016 12:36 PM [AUTHOR: mdane] [PLOTTER: None] [STYLE: WHP-Standard.ctb] [PATH: P:\City of Newport\0009837W\Drawings\Civil\AIP\_Sheets\0009837W-a-cover.dwg] [LAYOUT: 1 - Cover]

**WHPacific**  
 9755 SW Barnes Rd, Suite 300  
 Portland, OR 97225  
 503-626-0455 Fax 503-526-0775  
 www.whpacific.com

\*THE PREPARATION OF THESE DOCUMENTS MAY HAVE BEEN SUPPORTED, IN PART THROUGH THE AIRPORT IMPROVEMENT PROGRAM FINANCIAL ASSISTANCE FROM THE FEDERAL AVIATION ADMINISTRATION (PROJECT NUMBER 3-41-0040-023) AS PROVIDED UNDER TITLE 49, UNITED STATES CODE, SECTION 47104. THE CONTENTS DO NOT NECESSARILY REFLECT THE OFFICIAL VIEWS OR POLICY OF THE FAA. ACCEPTANCE OF THESE DOCUMENTS BY THE FAA DOES NOT IN ANY WAY CONSTITUTE A COMMITMENT ON THE PART OF THE UNITED STATES TO PARTICIPATE IN ANY DEVELOPMENT DEPICTED HEREIN NOR DOES IT INDICATE THAT THE PROPOSED DEVELOPMENT IS ENVIRONMENTALLY ACCEPTABLE IN ACCORDANCE WITH APPROPRIATE PUBLIC LAWS.\*

SHEET INFO		REVISIONS			
DESIGNED	MD/RI	NO.	BY	DATE	REMARKS
DRAWN	RI				
CHECKED	MD				
APPROVED	DN				
LAST EDIT	2/2/2018				
PLOT DATE	2/2/2018				
SUBMITTAL					

COVER			SHEET NUMBER
CITY OF NEWPORT, OR. NEWPORT MUNICIPAL AIRPORT MASTER PLAN UPDATE			1
PROJECT NUMBER P0009837W	DRAWING FILE NAME 0009837W-A-COVER	SCALE NO SCALE	