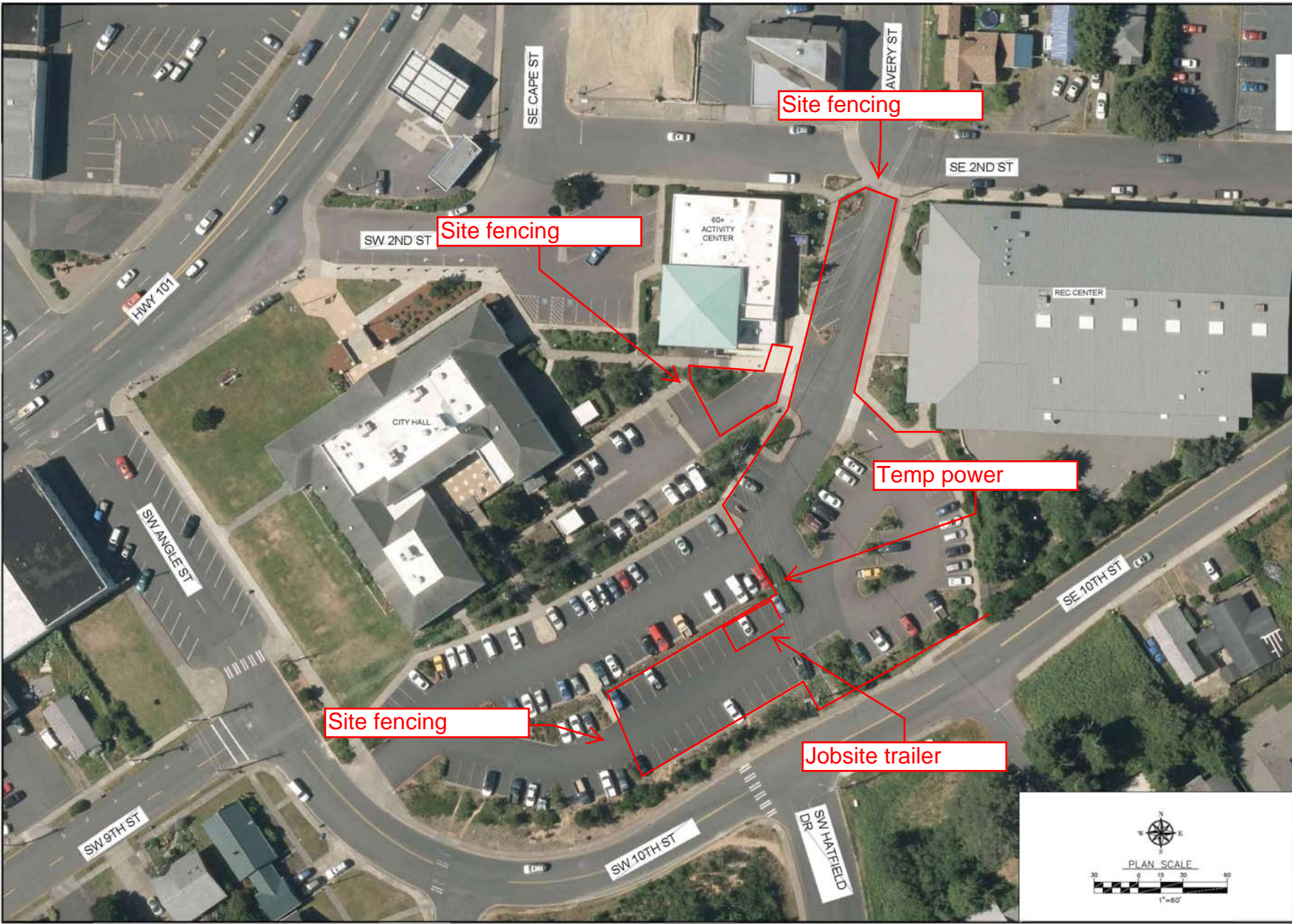


DATE: 5/12/15 FILE: Y:\CON Projects\2002 Newport\2002-031 Newport City Hall Parking Expansion and Access\Imp\Drawings\Grading-Working.dwg



Civil West
 Engineering Services, Inc.
 609 SW Hubert Street
 Newport, Oregon 97365
 541-264-7040
 www.civilwest.com

REV.	DATE	DESCRIPTION	BY

Designed By: VAS
 Checked By: JCP
 Project No: 2002-031

CITY OF NEWPORT
 LINCOLN COUNTY, OREGON
 CITY HALL PARKING EXPANSION PLAN
 AERIAL SITE MAP - (EXISTING LAYOUT)

Scale No. _____
 Date: **MAY 2015**

