

GENERAL STANDARD DETAILS

STANDARD DETAIL DRAWINGS INDEX

- G-010: DRAWING INDEX
- G-020: LEVEL ONE SITE PLAN REQUIREMENTS
- G-051: STANDARD UTILITY LOCATIONS
- G-052: JOINT TRENCH DETAIL WHEN CROSSING PUBLIC UTILITIES
- G-053: JOINT TRENCH DETAIL
- G-100: TYPICAL TRENCH DETAIL PAVED ROADS
- G-101: TYPICAL TRENCH DETAIL FOR GRAVEL ROADS
- G-105: STREET CUT / T-PATCH
- G-150: PIPE ANCHOR / TRENCH CUT-OFF WALL DETAIL
- G-160: POTHOLE UTILITY LOCATION BACKFILL



City of Newport
169 SW Coast Hwy
Newport, Oregon 97365
(541) 574-3366 Fax: (541) 265-3301

STANDARD DETAIL DRAWING INDEX

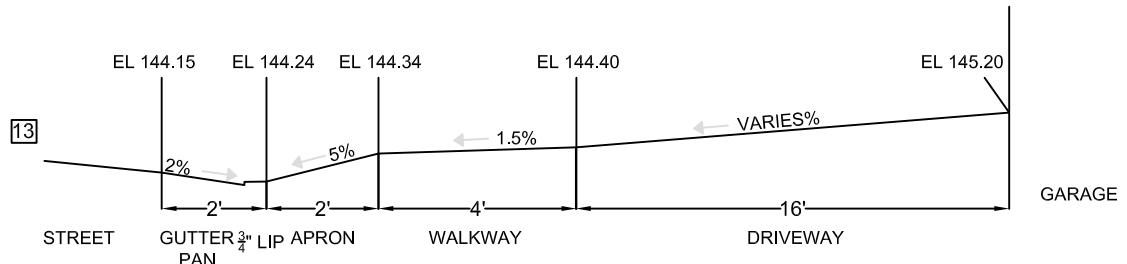
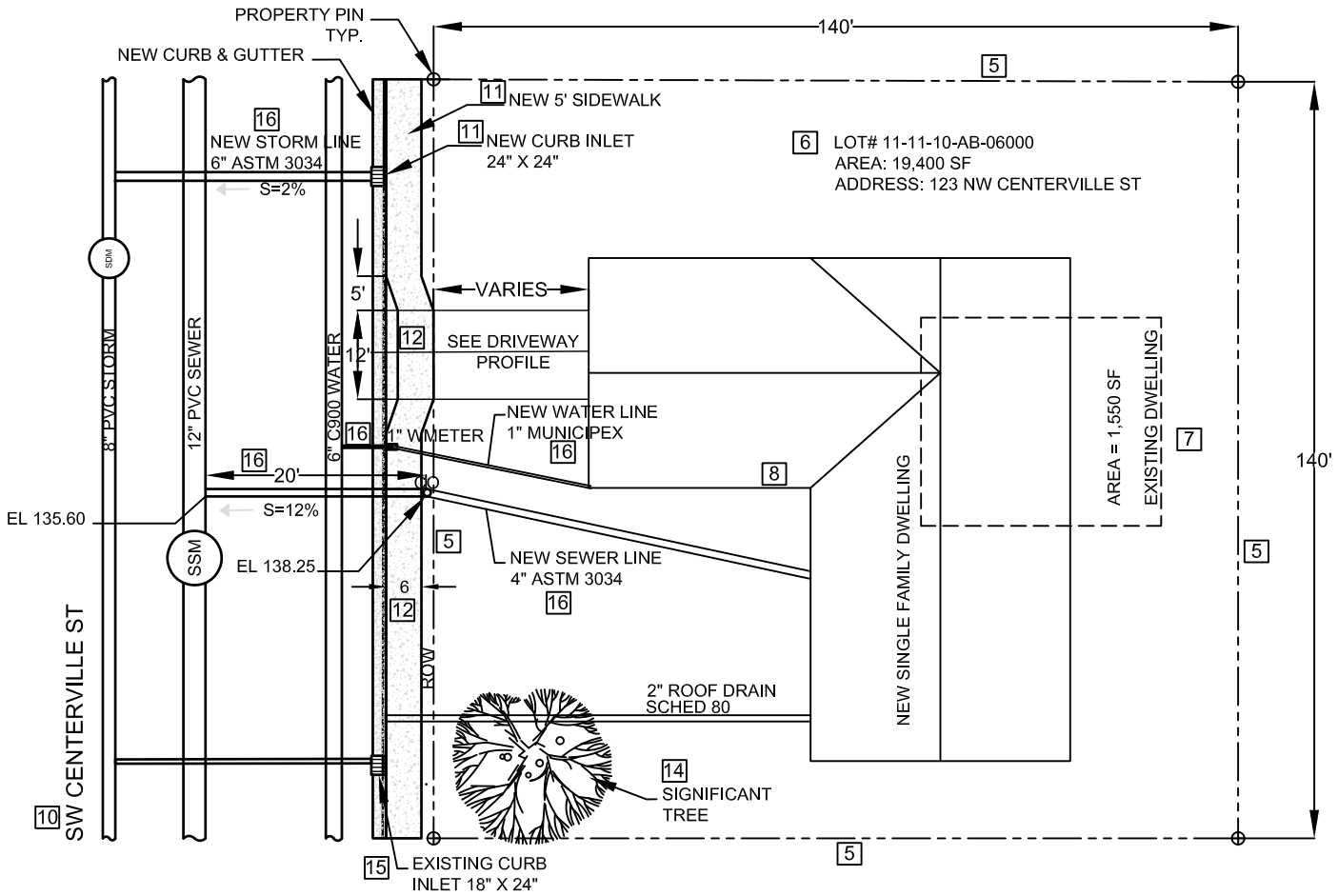
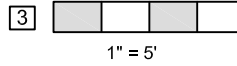
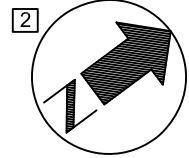
DETAIL NO.

G-010

10/20/2022

9 NUMBERS WITH BOXES CORRESPOND TO SITE PLAN SUBMITTAL CHECKLIST. SUBMIT COMPLETED CHECKLIST WITH ROW APPLICATION/ PLAN REVIEW

4 SITE PLAN



DRIVEWAY PROFILE

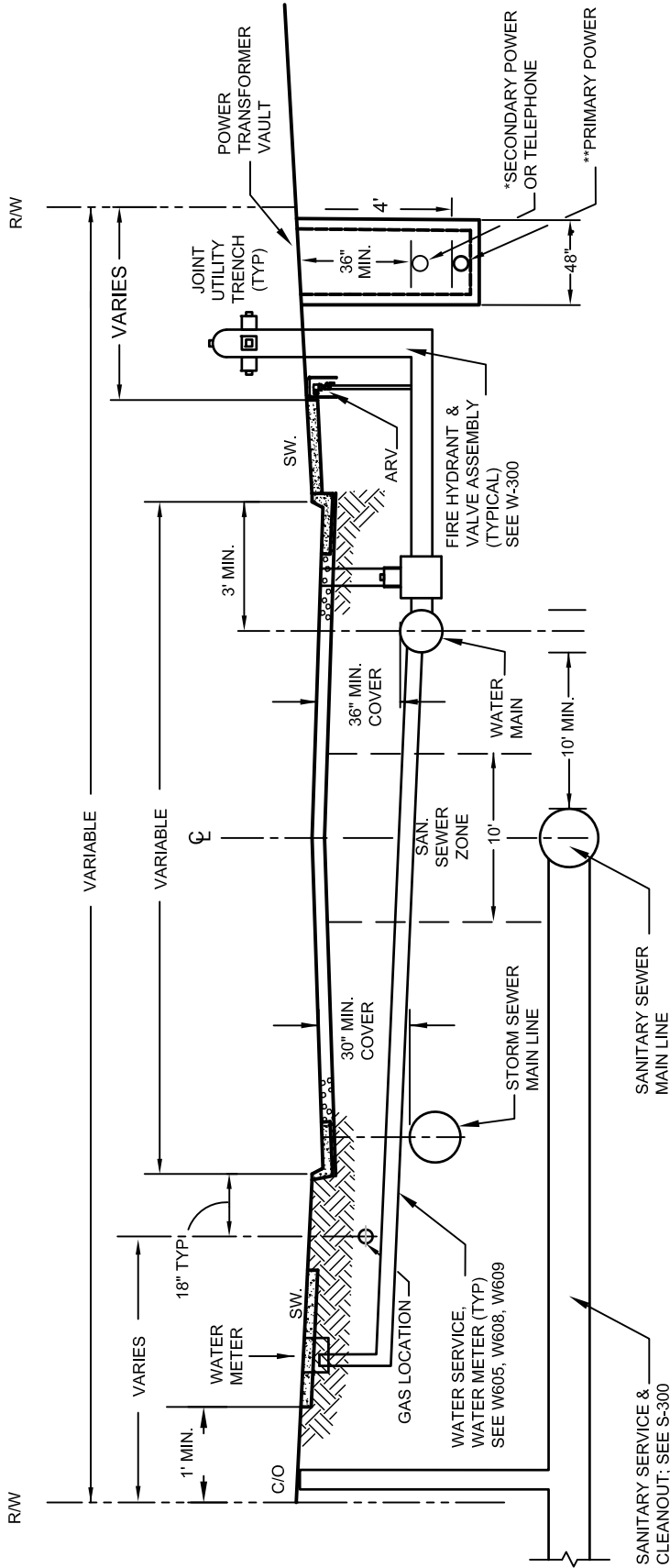
- 9 NO OVERHANGS
- 12 NO PROPOSED STRUCTURES, DECKS, PORCHES OR RETAINING WALLS IMPACTING ROW
- 17 NO EASEMENTS



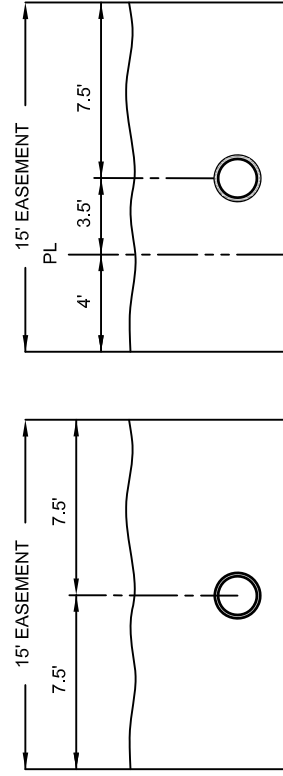
City of Newport
 169 SW Coast Hwy
 Newport, Oregon 97365
 (541) 574-3366 Fax: (541) 265-3301

LEVEL ONE SITE PLAN REQUIREMENTS

DETAIL NO.
G-020
5/23/2024



15' EASEMENT LAYOUT OPTIONS



NOTES:

1. 10' HORIZONTAL SEPARATION SHALL BE MAINTAINED BETWEEN WATER AND SEWER TO COMPLY WITH SEPARATION REQUIREMENTS OF OAR 333-061-050.
2. MANHOLE LIDS SHALL NOT BE LOCATED DIRECTLY IN NORMAL WHEEL PATH.
3. 12" CLEARANCE ON PERPENDICULAR CROSSING TYPICAL.
4. SUBMIT PLAN FOR JOINT UTILITY TRENCH AS PART OF ROW PERMIT APPLICATION; COORDINATE WITH LOCAL UTILITIES.
5. EASEMENTS SHALL BE WIDE ENOUGH TO DRIVE OVER AND OPERATE MAINTENANCE EQUIPMENT.



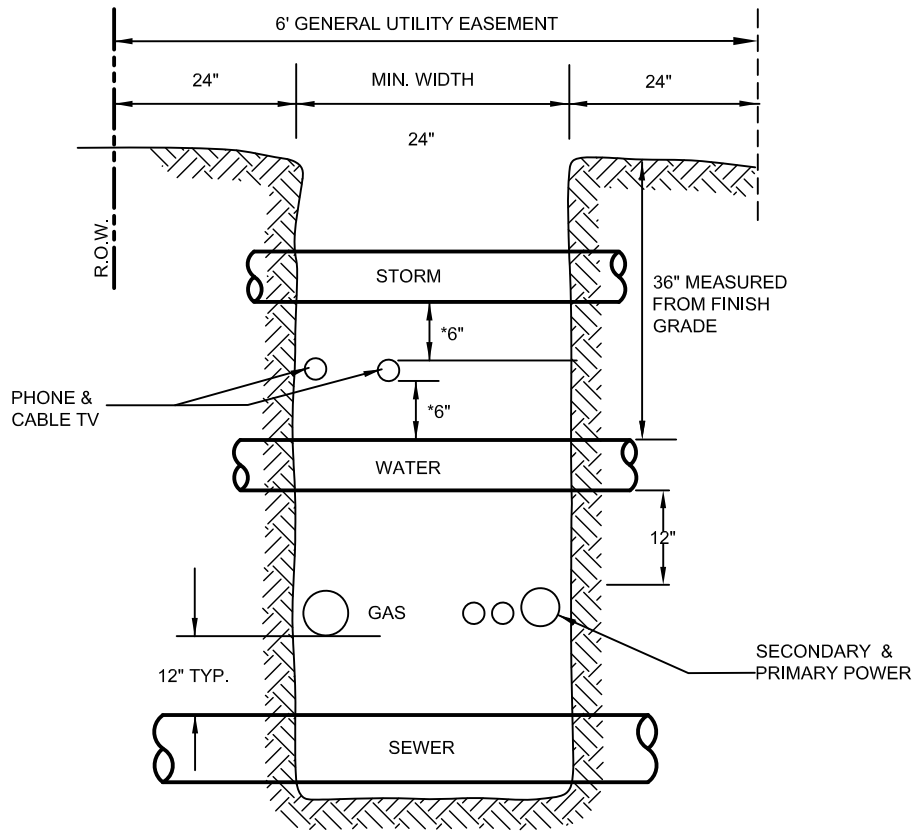
City of Newport
 169 SW Coast Hwy
 Newport, Oregon 97365
 (541) 574-3366 Fax: (541) 265-3301

STANDARD UTILITY
 LOCATIONS

DETAIL NO.

G-051

12/27/2023



PERPENDICULAR CROSSING CLEARANCES N.T.S.

NOTES:

1. WATER DISTRIBUTION MAINS SHALL HAVE 36" MINIMUM COVER OR AS OTHERWISE DIRECTED.
2. SEWER MAINS SHALL HAVE 5.25' (63") MINIMUM COVER UNLESS OTHERWISE APPROVED TO AVOID CONFLICTS WITH WATER AND OTHER UTILITIES.
3. WATER, SEWER, STREETS, AND DRAINAGE SYSTEMS SUBJECT TO CITY STANDARDS.
4. ALL LAYOUTS AND LOCATIONS ARE SUBJECT TO CITY APPROVAL.
5. SEE DWGS T-050, T-051, AND T-052 FOR STANDARD STREET WIDTHS AND SECTIONS.
6. 12" CLEARANCE ON PERPENDICULAR CROSSING TYPICAL; 6" CLEARANCE MAY BE ALLOWED IN PERPENDICULAR CROSSINGS AS DIRECTED BY ENGINEER.
7. SUBMIT PLAN FOR JOINT UTILITY TRENCH AS PART OF ROW PERMIT APPLICATION; COORDINATE WITH LOCAL UTILITIES.
8. WHENEVER POSSIBLE BOTTOM WATER LINES SHALL BE ONE-AND-ONE-HALF (1.5) FEET OR MORE ABOVE TOP OF SANITARY SEWER LINES AT CROSSINGS WITH ONE FULL LENGTH OF WATER LINE CENTERED AT CROSSING. VARIANCES MUST BE APPROVED BY CITY ENGINEER PRIOR TO COMMENCING WORK. WHERE SANITARY SEWER LINES CROSS ABOVE OR WITHIN EIGHTEEN (18) INCHES VERTICAL SEPARATION OF WATER LINE, SEWER MAINS AND/OR SERVICE LATERALS SHALL BE EITHER REPLACED WITH A FULL LENGTH OF C900 PVC PIPE (DR 18) CENTERED AT THE CROSSING OR ENCASED IN CONCRETE LOW STRENGTH MATERIAL (CLSM) IN ACCORDANCE WITH OAR 333-061-050.



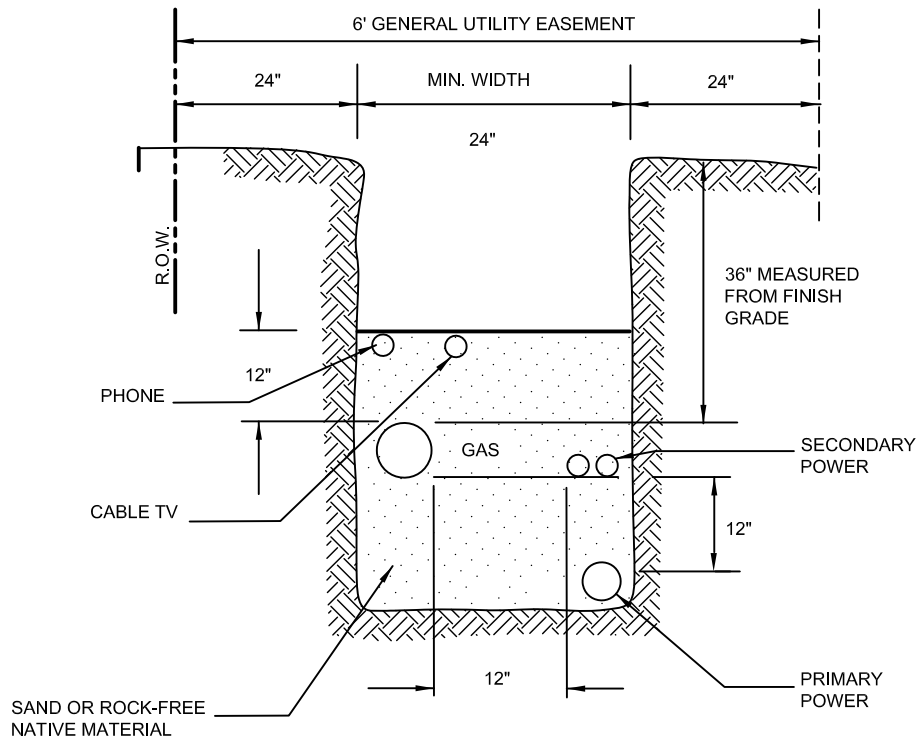
City of Newport
 169 SW Coast Hwy
 Newport, Oregon 97365
 (541) 574-3366 Fax: (541) 265-3301

**JOINT TRENCH DETAIL WHEN
 CROSSING PUBLIC UTILITIES**

DETAIL NO.

G-052

5/20/2020



*JOINT TRENCH DETAIL (OPTIONAL) N.T.S.
 PARALLEL CROSSING CLEARANCES

NOTES:

1. ALL LAYOUTS AND LOCATIONS ARE SUBJECT TO CITY APPROVAL.
2. 12" CLEARANCE ON PERPENDICULAR CROSSING TYPICAL; 6" CLEARANCE MAY BE ALLOWED IN PERPENDICULAR CROSSINGS AS DIRECTED BY ENGINEER.
3. SUBMIT PLAN FOR JOINT UTILITY TRENCH AS PART OF ROW PERMIT APPLICATION; COORDINATE WITH LOCAL UTILITIES.



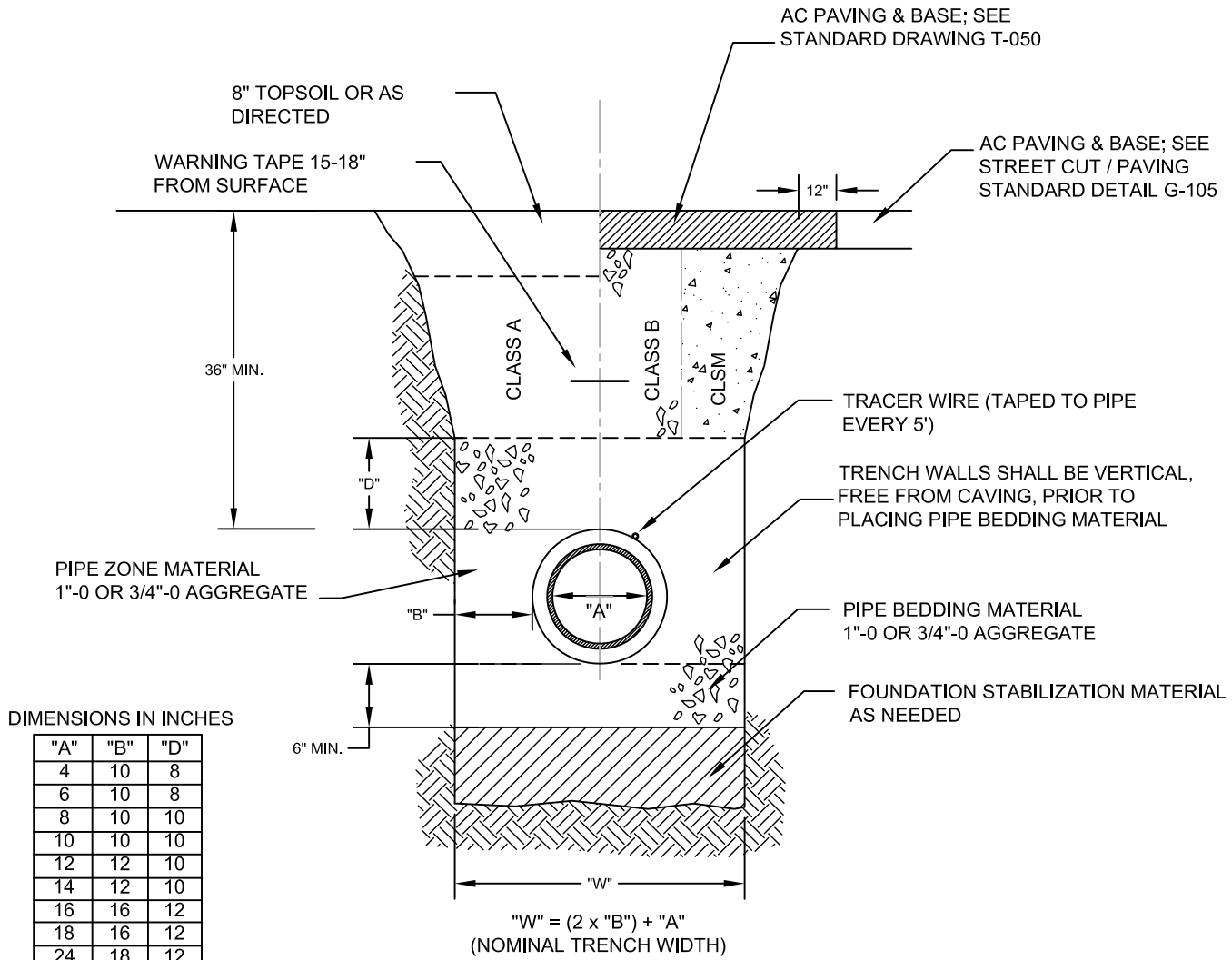
City of Newport
 169 SW Coast Hwy
 Newport, Oregon 97365
 (541) 574-3366 Fax: (541) 265-3301

JOINT TRENCH DETAIL

DETAIL NO.

G-053

5/20/2020



DIMENSIONS IN INCHES

"A"	"B"	"D"
4	10	8
6	10	8
8	10	10
10	10	10
12	12	10
14	12	10
16	16	12
18	16	12
24	18	12
30	18	12
36	24	14

"W" = (2 x "B") + "A"
(NOMINAL TRENCH WIDTH)

NOTES:

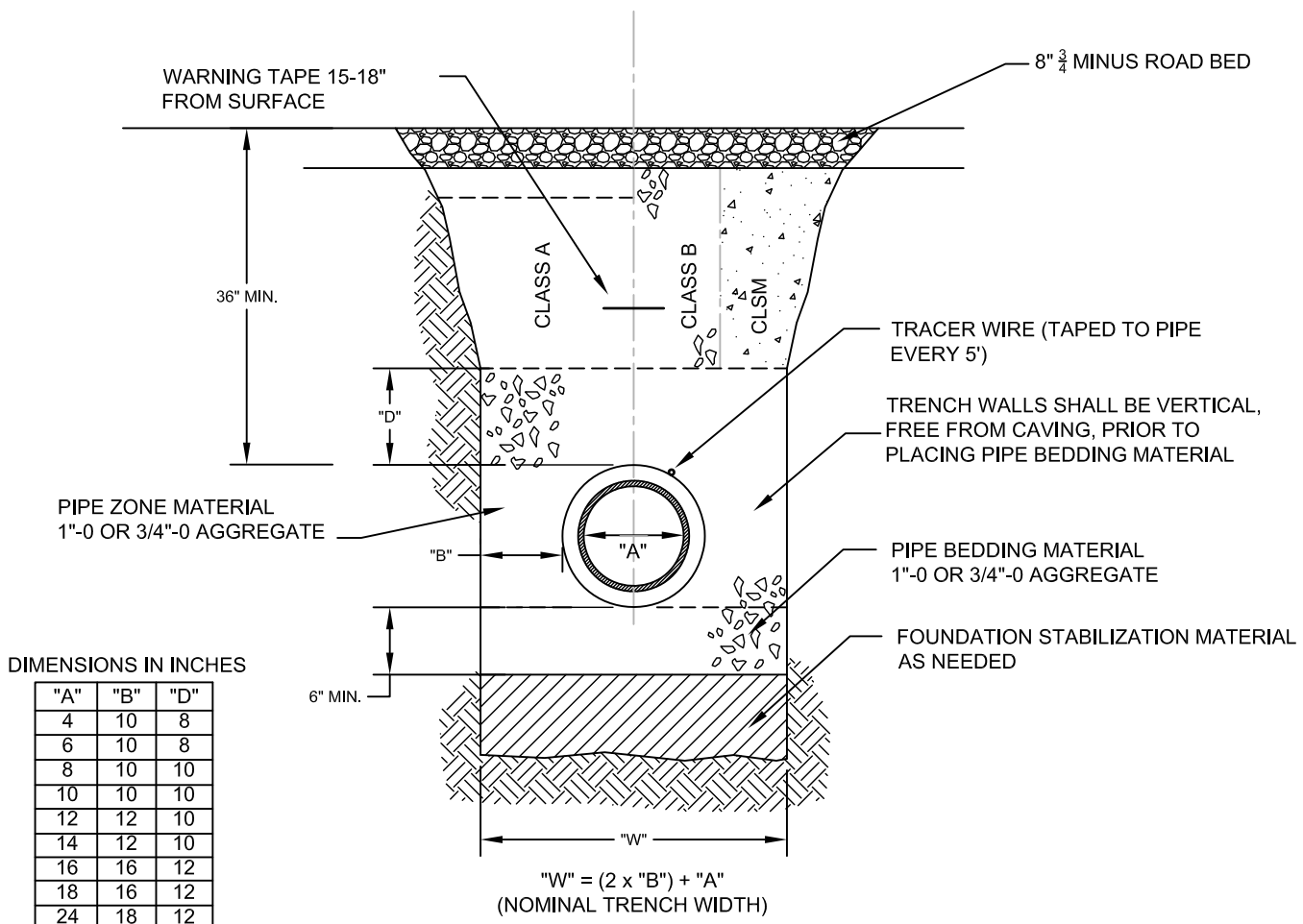
1. TRENCH EXCAVATION SHALL BE CONDUCTED IN A SAFE MANNER WITH ALL NECESSARY BRACING AND SHORING PROVIDED FOR COMPLIANCE WITH OSHA.
2. FOUNDATION STABILIZATION SHALL BE PROVIDED WHEN MATERIAL AT BOTTOM OF TRENCH IS UNSUITABLE AS DETERMINED BY CITY ENGINEER.
3. CLASS B BACKFILL REQUIRED UNLESS OTHERWISE DIRECTED BY CITY ENGINEER. BACKFILL AND DENSITY REQUIREMENTS SHALL CONFORM TO THE OREGON STANDARD SPECIFICATIONS FOR CONSTRUCTION, CURRENT VERSION, SECTION 00405.
4. TRACER WIRE REQUIRED FOR ALL NON-METALLIC PIPELINES. WIRE SHALL BE 10 GA. MINIMUM SOLID COPPER WIRE WITH BLUE 30 MIL THICK HDPE INSULATION RATED FOR DIRECT BURY. USE APPROVED WATERPROOF SPLICE AT ALL CONNECTIONS.
5. WARNING TAPE SHALL BE 6" WIDE, 4 MIL THICK TAPE; READING, AS APPROPRIATE : "CAUTION SEWER LINE BURIED BELOW"; "CAUTION WATER LINE BURIED BELOW"; "CAUTION STORM LINE BURIED BELOW"; TAPE COLOR AS APPROPRIATE FOR INSTALLED SERVICE.



City of Newport
169 SW Coast Hwy
Newport, Oregon 97365
(541) 574-3366 Fax: (541) 265-3301

TYPICAL TRENCH DETAIL
FOR PAVED ROADS

DETAIL NO.
G-100
10/27/2022



DIMENSIONS IN INCHES

"A"	"B"	"D"
4	10	8
6	10	8
8	10	10
10	10	10
12	12	10
14	12	10
16	16	12
18	16	12
24	18	12
30	18	12
36	24	14

"W" = (2 x "B") + "A"
(NOMINAL TRENCH WIDTH)

NOTES:

1. TRENCH EXCAVATION SHALL BE CONDUCTED IN A SAFE MANNER WITH ALL NECESSARY BRACING AND SHORING PROVIDED FOR COMPLIANCE WITH OSHA.
2. FOUNDATION STABILIZATION SHALL BE PROVIDED WHEN MATERIAL AT BOTTOM OF TRENCH IS UNSUITABLE AS DETERMINED BY CITY ENGINEER.
3. CLASS B BACKFILL REQUIRED UNLESS OTHERWISE DIRECTED BY CITY ENGINEER. BACKFILL AND DENSITY REQUIREMENTS SHALL CONFORM TO THE OREGON STANDARD SPECIFICATIONS FOR CONSTRUCTION, CURRENT VERSION, SECTION 00405.
4. TRACER WIRE REQUIRED FOR ALL NON-METALLIC PIPELINES. WIRE SHALL BE 10 GA. MINIMUM SOLID COPPER WIRE WITH BLUE 30 MIL THICK HDPE INSULATION RATED FOR DIRECT BURY. USE APPROVED WATERPROOF SPLICE AT ALL CONNECTIONS.
5. WARNING TAPE SHALL BE 6" WIDE, 4 MIL THICK TAPE; READING, AS APPROPRIATE : "CAUTION SEWER LINE BURIED BELOW"; "CAUTION WATER LINE BURIED BELOW"; "CAUTION STORM LINE BURIED BELOW"; TAPE COLOR AS APPROPRIATE FOR INSTALLED SERVICE.



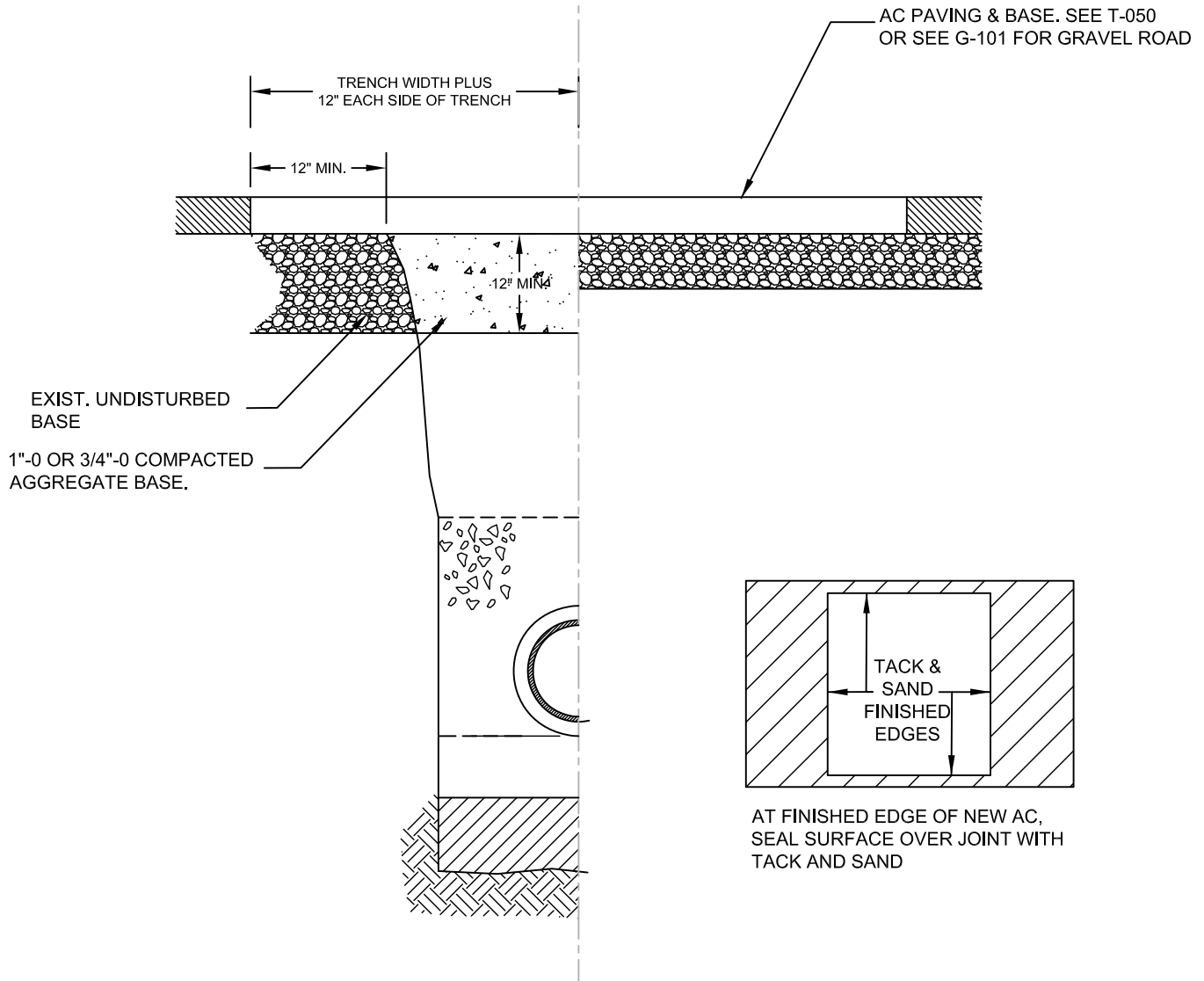
City of Newport
169 SW Coast Hwy
Newport, Oregon 97365
(541) 574-3366 Fax: (541) 265-3301

TYPICAL TRENCH DETAIL
FOR GRAVEL ROADS

DETAIL NO.
G-101
10/27/2022

TRENCH RESURFACING

STREET REPLACEMENT



NOTES:

1. CONTRACTOR AND CITY SHALL MEET ON SITE BEFORE PAVING BEGINS TO REVIEW ROAD BASE PREPARATION PRIOR TO PLACING ASPHALT.
2. PLACE AC TO A MINIMUM THICKNESS OF 4 INCHES OR THICKNESS OF REMOVED PAVEMENT, *WHICHEVER IS GREATER*. PLACE AC IN 2 INCH LIFTS; COMPACT AS DIRECTED.
5. ALL EXISTING AC OR PCC PAVEMENT SHALL BE SAWCUT IMMEDIATELY PRIOR TO REPAVING. BROKEN EDGES ARE NOT ALLOWED.
6. COMPLY WITH THE REQUIREMENTS OF AGENCY HAVING JURISDICTION OVER THE ROAD IN WHICH THE STREET CUT OCCURS.
7. SAND AND TACK SEAL ALL AC COLD JOINTS.



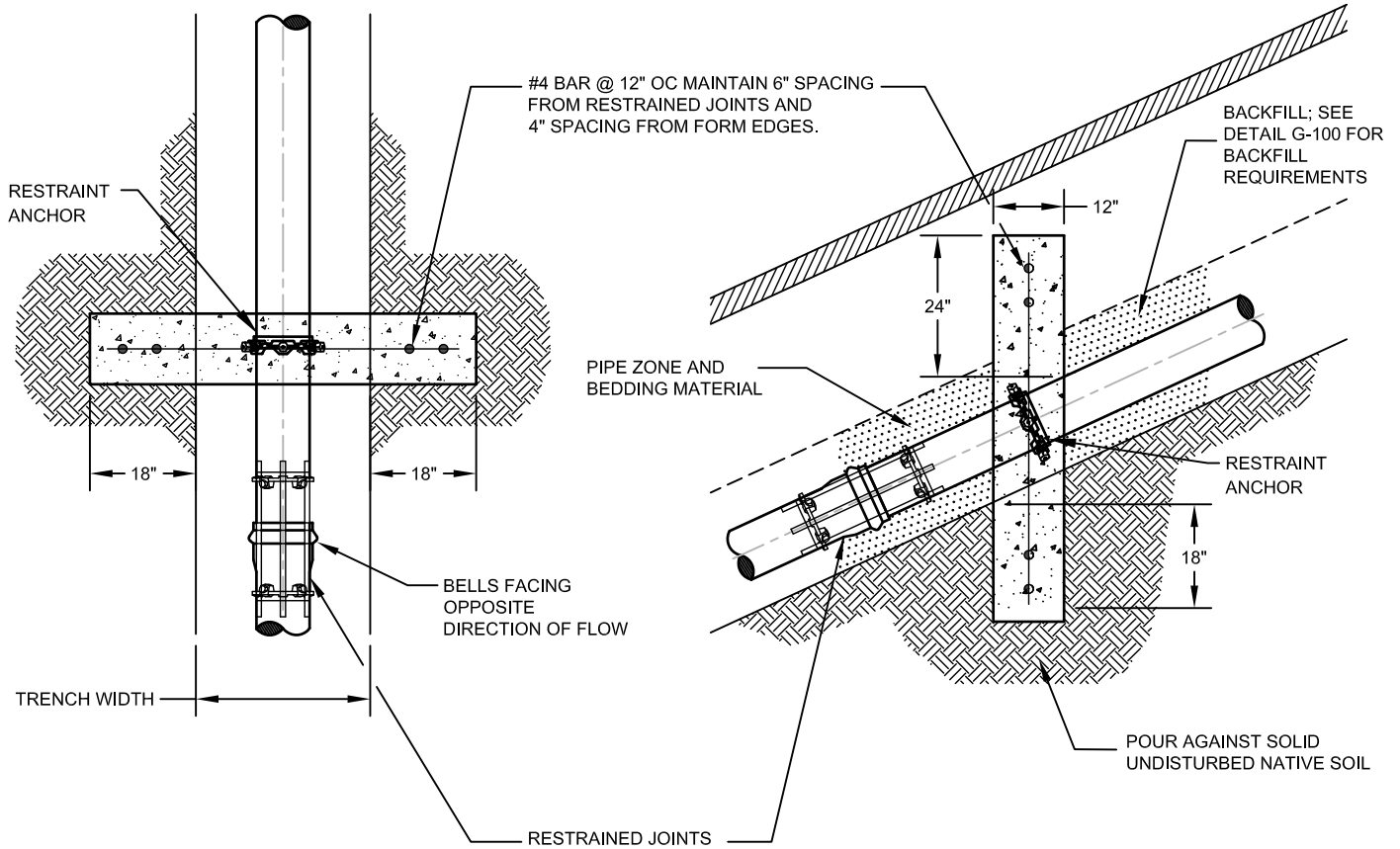
City of Newport
 169 SW Coast Hwy
 Newport, Oregon 97365
 (541) 574-3366 Fax: (541) 265-3301

STREET CUT / T-PATCH

DETAIL NO.

G-105

2/12/2024



NOTES:

1. PIPE ANCHOR CUT-OFF WALLS REQUIRED AT ALL PIPELINES WHERE SLOPE EXCEEDS 20%.
2. RESTRAINED JOINT PIPE REQUIRED WHEN SLOPES EXCEED 20%.
3. WALLS SHALL BE FORMED WITHIN TRENCH. REMOVE FORMS PRIOR TO BACKFILLING.
4. STRUCTURAL CONCRETE SHALL CONFORM WITH OREGON STANDARD SPECIFICATIONS FOR CONSTRUCTION, CURRENT EDITION, SECTION 00540.
5. SPACING OF WALLS SHALL BE:

SLOPE	SPACING
20-34%	35 FEET
35-50%	25 FEET
51-+%	15 FEET
6. BACKFILL SHALL CONFORM TO DETAIL G-100.



City of Newport
 169 SW Coast Hwy
 Newport, Oregon 97365
 (541) 574-3366 Fax: (541) 265-3301

PIPE ANCHOR / TRENCH CUT-OFF WALL DETAIL

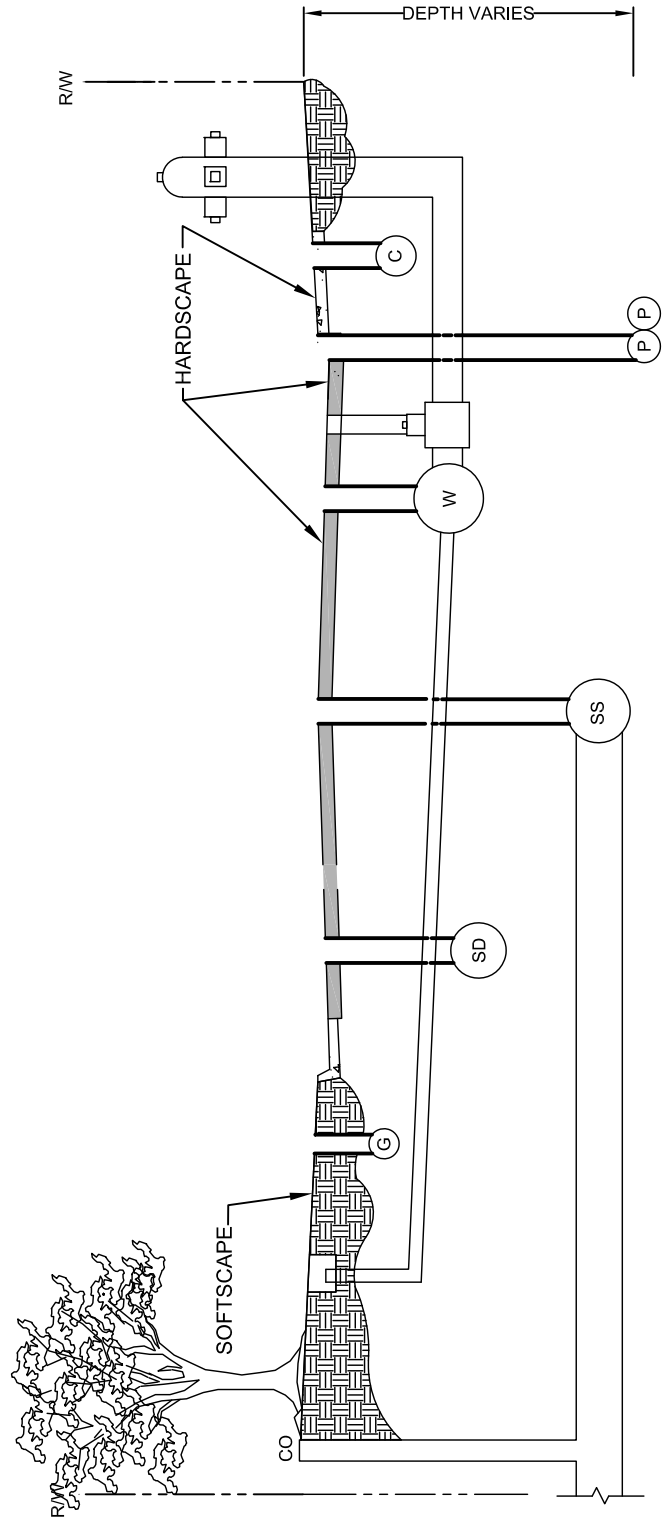
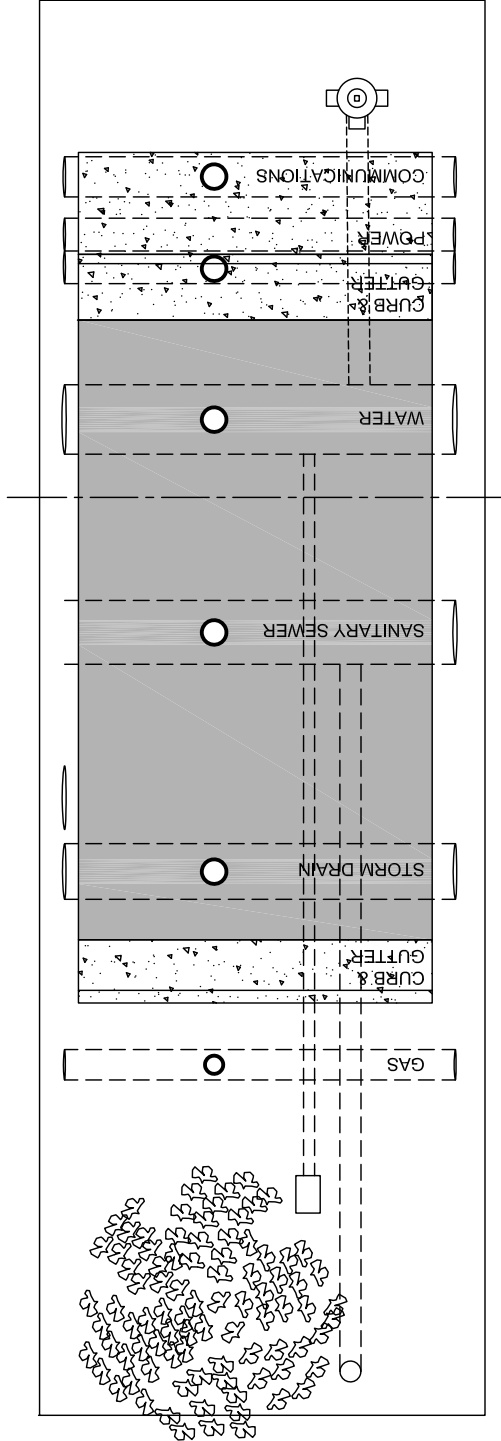
DETAIL NO.

G-150

5/20/2020

NOTES:

1. PNEUMATIC POGO STICK TAMPER REQUIRED FOR LIFT COMPACTION OF BACKFILL..
2. NO LATERAL EXCAVATION OUTSIDE SURFACE CUT. IF SIDES OF POT HOLE CAVE IN, INCREASE SURFACE CUT TO INCLUDE CAVE-IN AREA.
3. IF POTHOLES ARE WITHIN TWO FEET OF EACH OTHER, OR SEVERAL POTHOLES OCCUR ACROSS STREET, CUT SURFACE AREA TO INCLUDE ALL POTHOLES AND REPLACE SURFACE AS ONE ASPHALT PATCH.
4. BACKFILL UNDER ASPHALT SHALL BE WITH APPROVED AGGREGATE IN 12" COMPACTED LIFT.
5. POTHOLES IN SIDEWALK OR CURB REQUIRE FULL PANEL REPLACEMENT.
6. POTHOLES IN SOFT SURFACES MAY BE BACKFILLED WITH NATIVE SOILS COMPACTED IN 12" LIFTS.



City of Newport
 169 SW Coast Hwy
 Newport, Oregon 97365
 (541) 574-3366 Fax: (541) 265-3301

POT HOLE UTILITY LOCATION BACKFILL

DETAIL NO.

G-160

12/12/2023