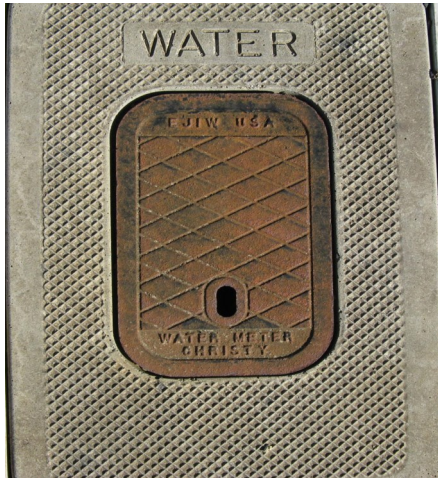


# What's in your water meter box?

**Some simple things you can do to troubleshoot your water use.**

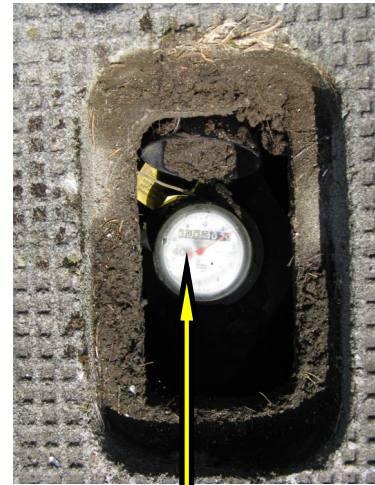
**Your water meter records how much water you have used. It may be able to tell you if you have a leak, which can lead to higher-than-normal water bills. This brief guide will help you find your meter, read the meter, and, best of all, know what it means. Let's get started!**



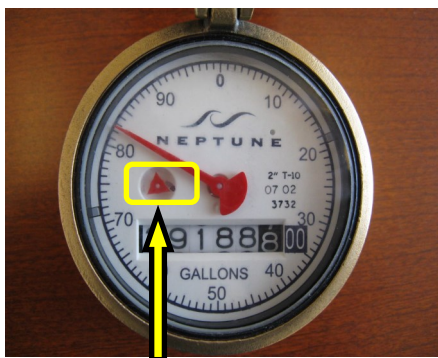
**Here's a typical water meter box. It's often found in front of your house near the street in the city "right-of-way".**



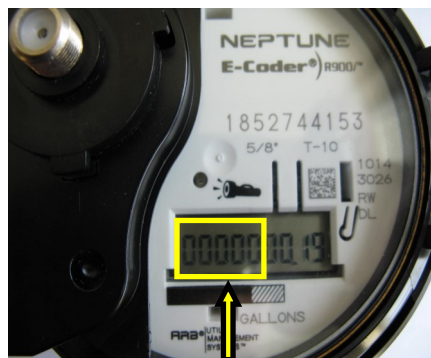
**Take off the metal lid to reveal the water meter. You might need to remove some dirt to get to it. That number is your water meter number.**



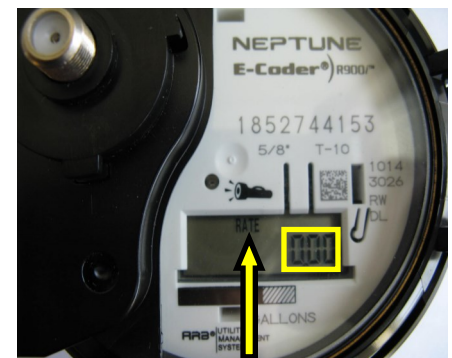
**Flip the round lid open to reveal the meter face. Can you see the small red triangle? That's a flow indicator, sensing small flows of water through meter.**



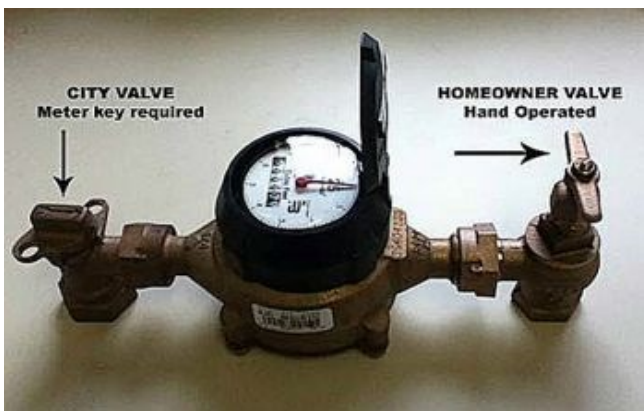
**That red triangle will turn if any water is flowing through the meter. If all the water is off and it's turning, you probably have a leak.**



**This is a new electronic meter. It will give more accurate reads. The first 5 numbers are your water "USE".**



**These meters will be installed over time. It will alternately flash a "USE" and "RATE" window. If all water is off, anything over 0.00 in the "RATE" window means a leak.**



**On the left is a typical water meter setup with a homeowner shut-off valve installed. Again, you will probably have to remove some dirt to find it. This photo is an example, and your valve may look different, but it will be between the water meter and the residence. This valve is useful if you need to turn off the water to your house. City ordinance now requires the installation of this valve; if you have an older house, you may not have had one installed. We encourage you to get one installed by a plumber. Don't wait until it's the middle of the night and you are dealing with a broken water pipe!**

**Questions? Call Public Works: 541-574-3366.**